



FIGURE 1. As Received Right Front $\frac{3}{4}$ View of Test Vehicle



FIGURE 2. As Received Left Rear $\frac{3}{4}$ View of Test Vehicle



FIGURE 3. Test Vehicle Manufacturer's Label



FIGURE 4. Test Vehicle Tire Information Placard



FIGURE 5. Pre-Test Front View of Test Vehicle

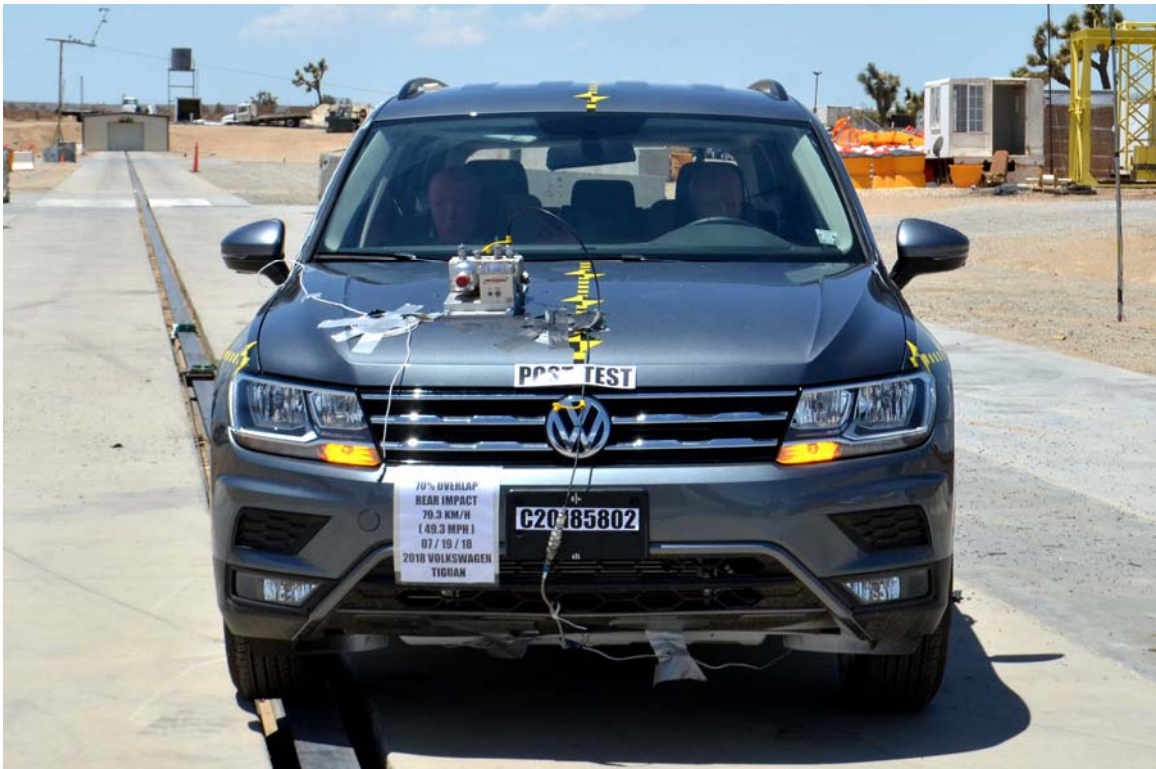


FIGURE 6. Post-Test Front View of Test Vehicle



FIGURE 7. Pre-Test Left Front $\frac{3}{4}$ View of Test Vehicle



FIGURE 8. Post-Test Left Front $\frac{3}{4}$ View of Test Vehicle



FIGURE 9. Pre-Test Left View of Test Vehicle



FIGURE 10. Post-Test Left View of Test Vehicle



FIGURE 11. Pre-Test Left Rear $\frac{3}{4}$ View of Test Vehicle

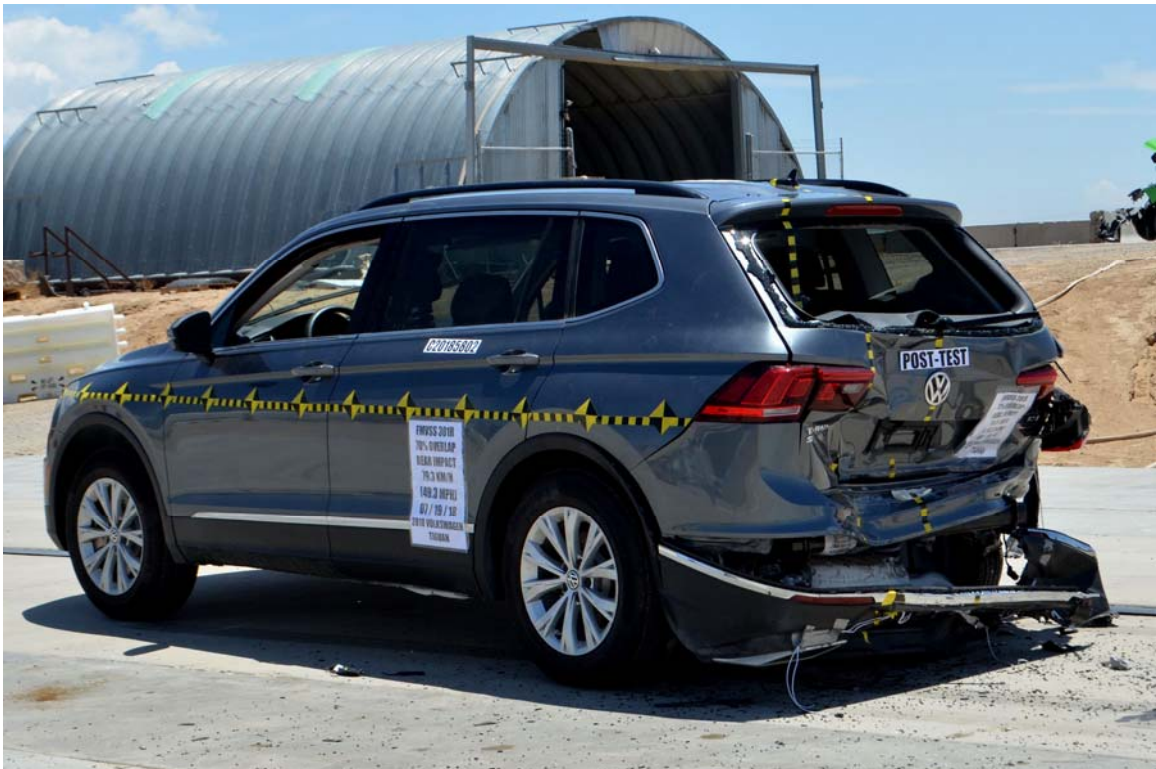


FIGURE 12. Post-Test Left Rear $\frac{3}{4}$ View of Test Vehicle



FIGURE 13. Pre-Test Rear View of Test Vehicle

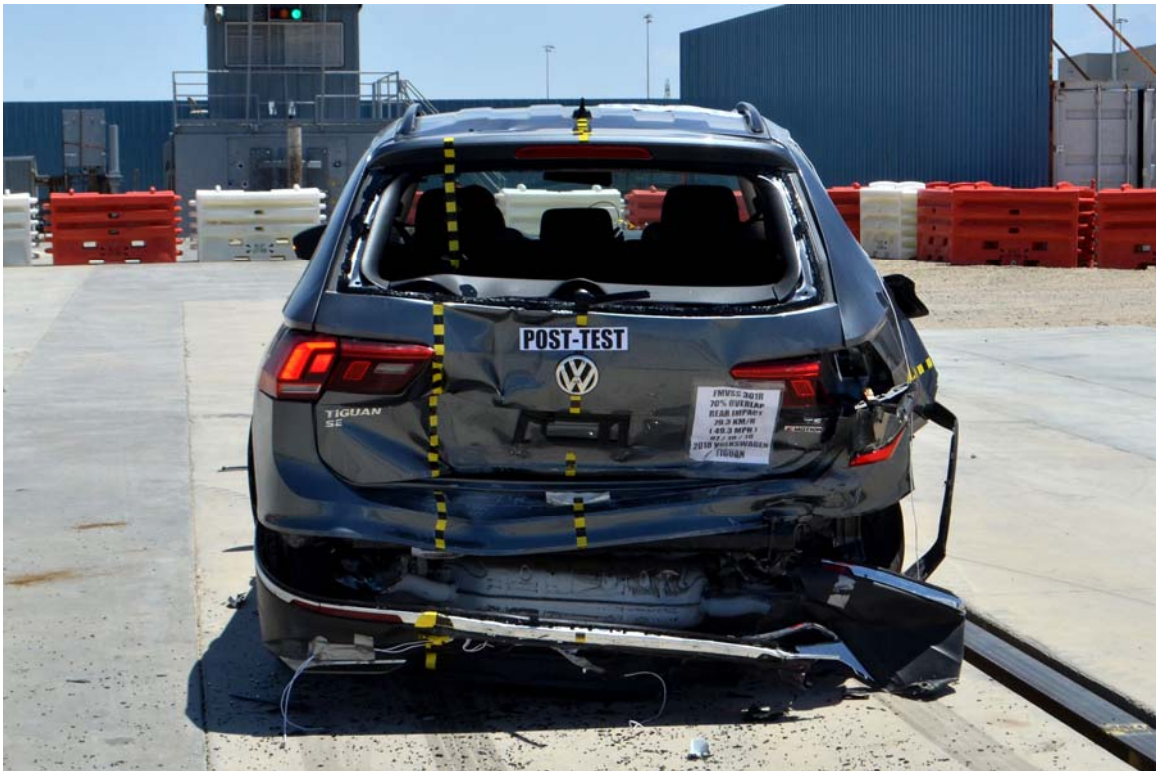


FIGURE 14. Post-Test Rear View of Test Vehicle



FIGURE 15. Pre-Test Right Rear ¾ View of Test Vehicle



FIGURE 16. Post-Test Right Rear ¾ View of Test Vehicle



FIGURE 17. Pre-Test Right View of Test Vehicle



FIGURE 18. Post-Test Right View of Test Vehicle



FIGURE 19. Pre-Test Right Front $\frac{3}{4}$ View of Test Vehicle



FIGURE 20. Post-Test Right Front $\frac{3}{4}$ View of Test Vehicle



FIGURE 21. Pre-Test Close-Up View of Impact Point Target

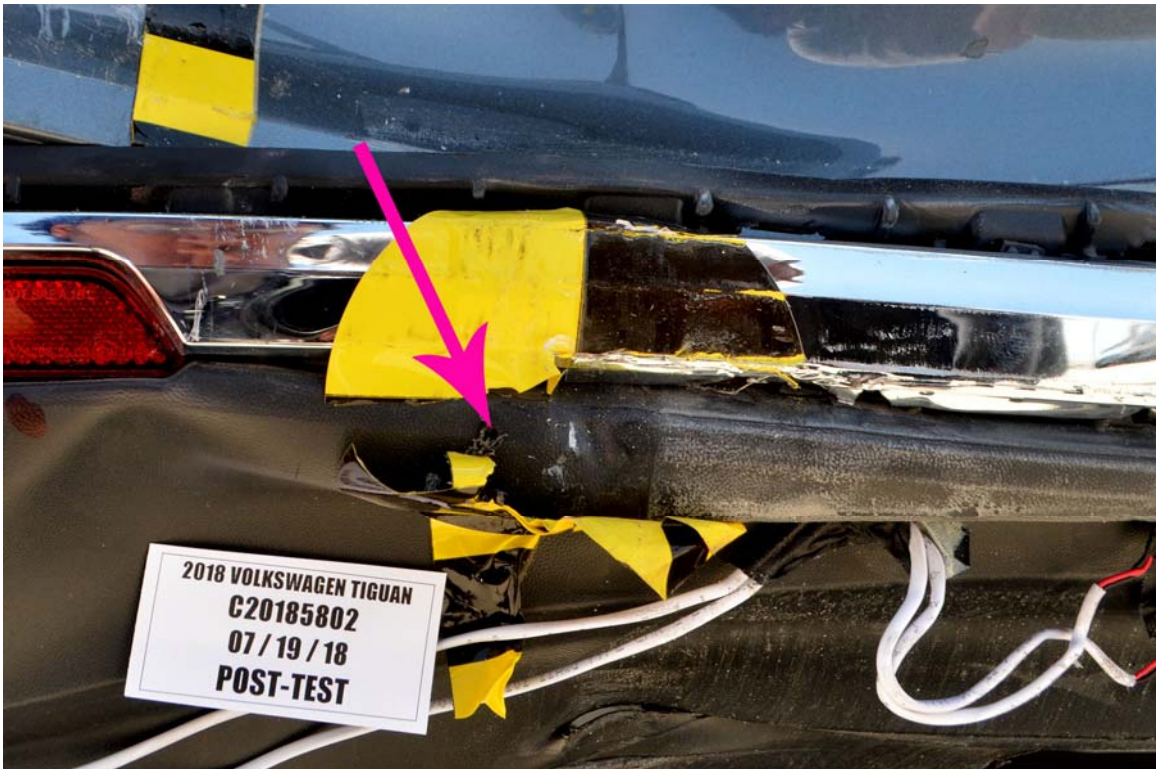


FIGURE 22. Post-Test Close-Up View of Impact Point Target



FIGURE 23. Pre-Test View of Fuel Filler Cap



FIGURE 24. Post-Test View of Fuel Filler Cap

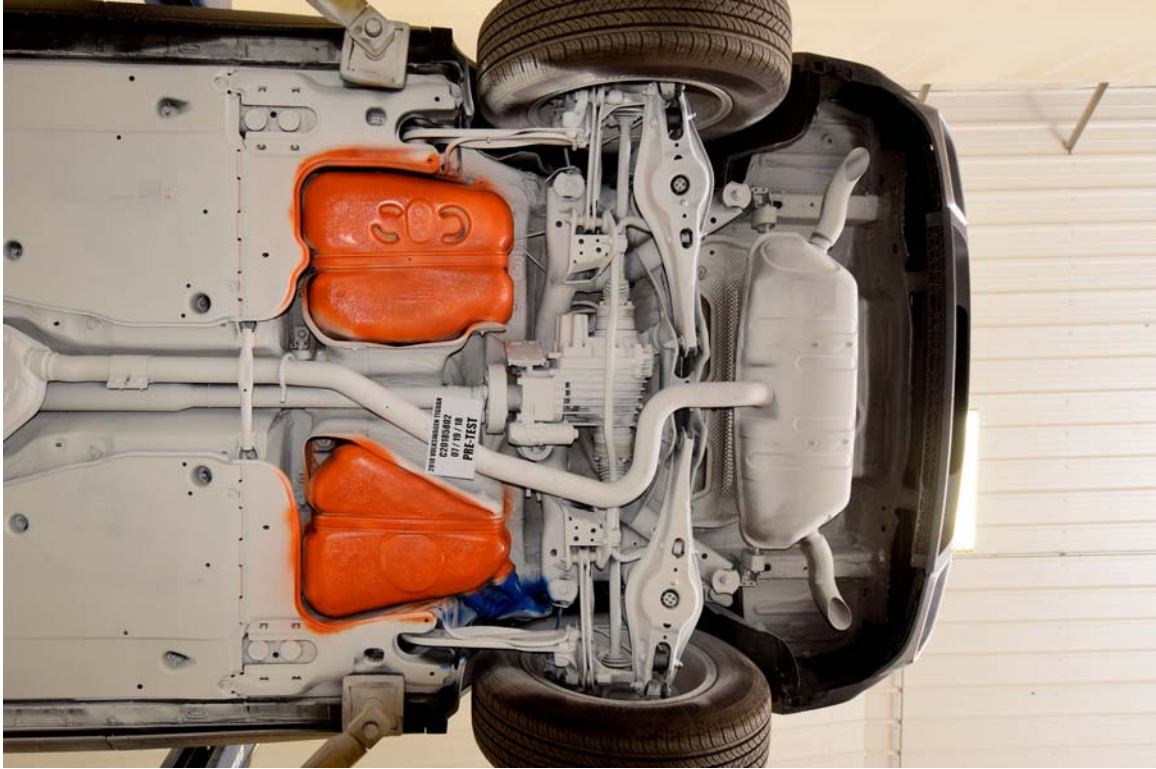


FIGURE 25. Pre-Test Rear Underbody View of Test Vehicle

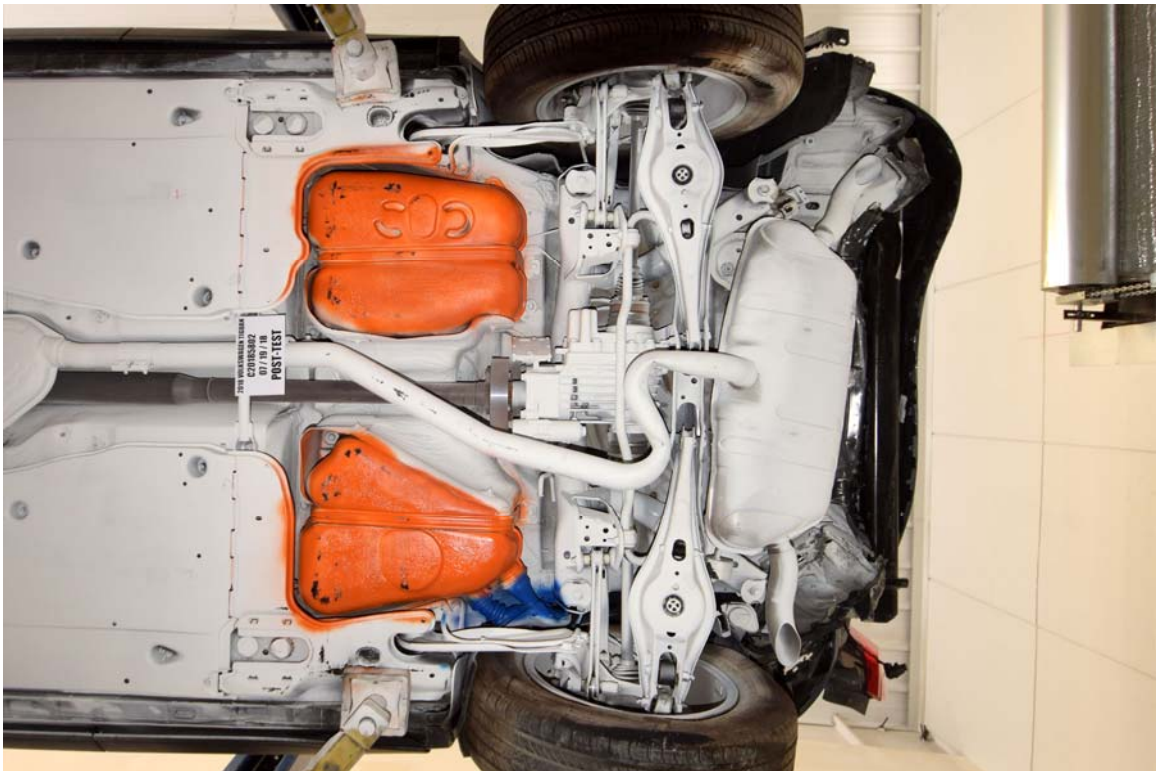


FIGURE 26. Post-Test Rear Underbody View of Test Vehicle



FIGURE 27. Pre-Test Underbody View of Fuel Tank

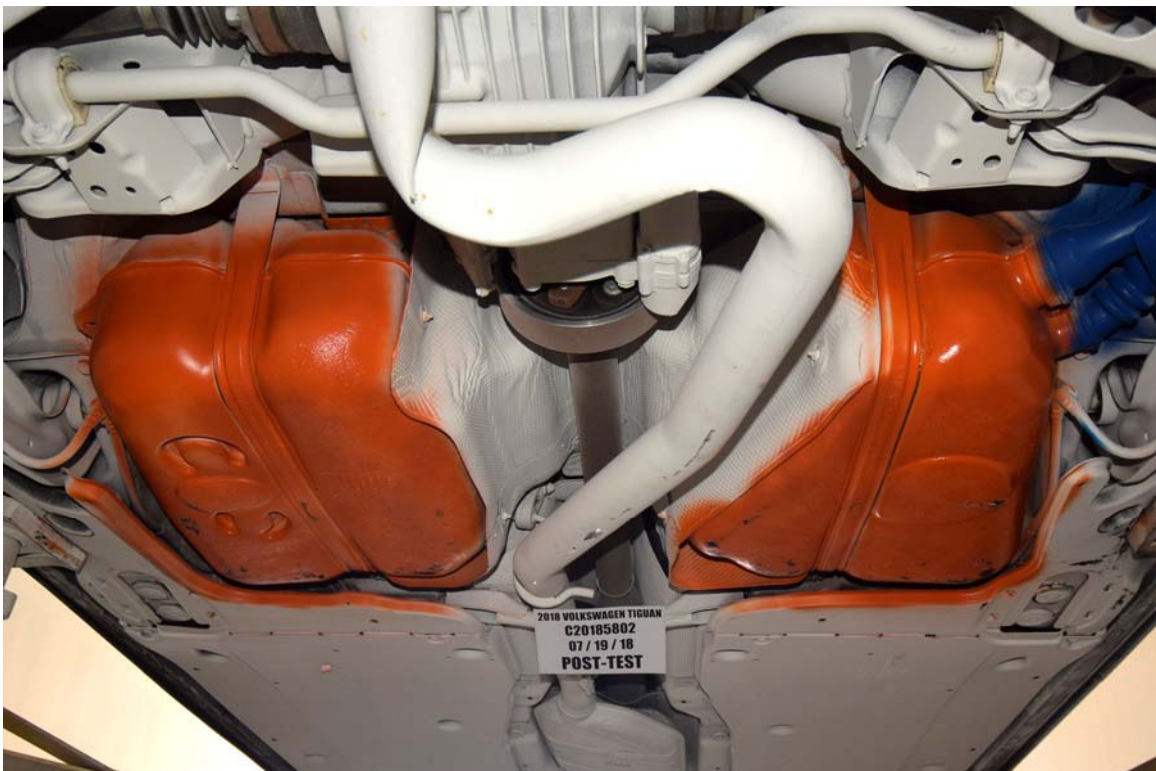


FIGURE 28. Post-Test Underbody View of Fuel Tank



FIGURE 29. Pre-Test Underbody View of Fuel Lines

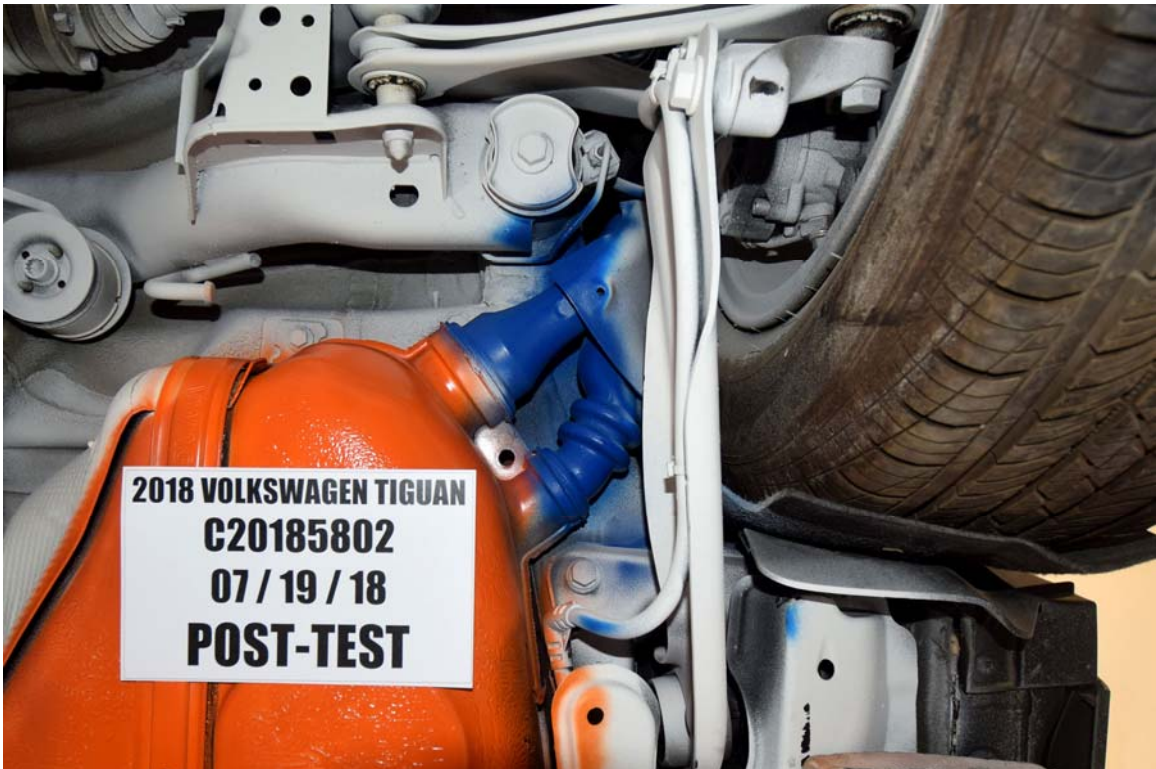


FIGURE 30. Post-Test Underbody View of Fuel Lines

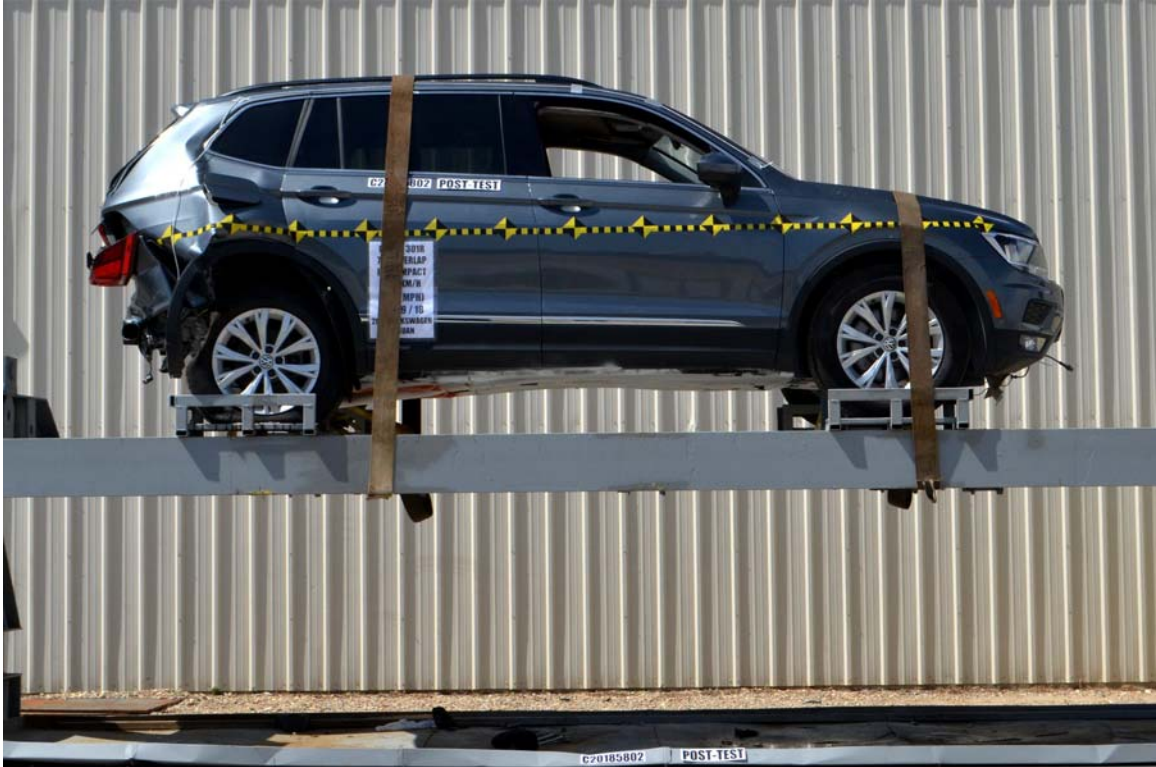


FIGURE 31. Test Vehicle at 0° on FMVSS 301 Static Rollover Device



FIGURE 32. Test Vehicle at 90° on FMVSS 301 Static Rollover Device



FIGURE 33. Test Vehicle at 180° on FMVSS 301 Static Rollover Device

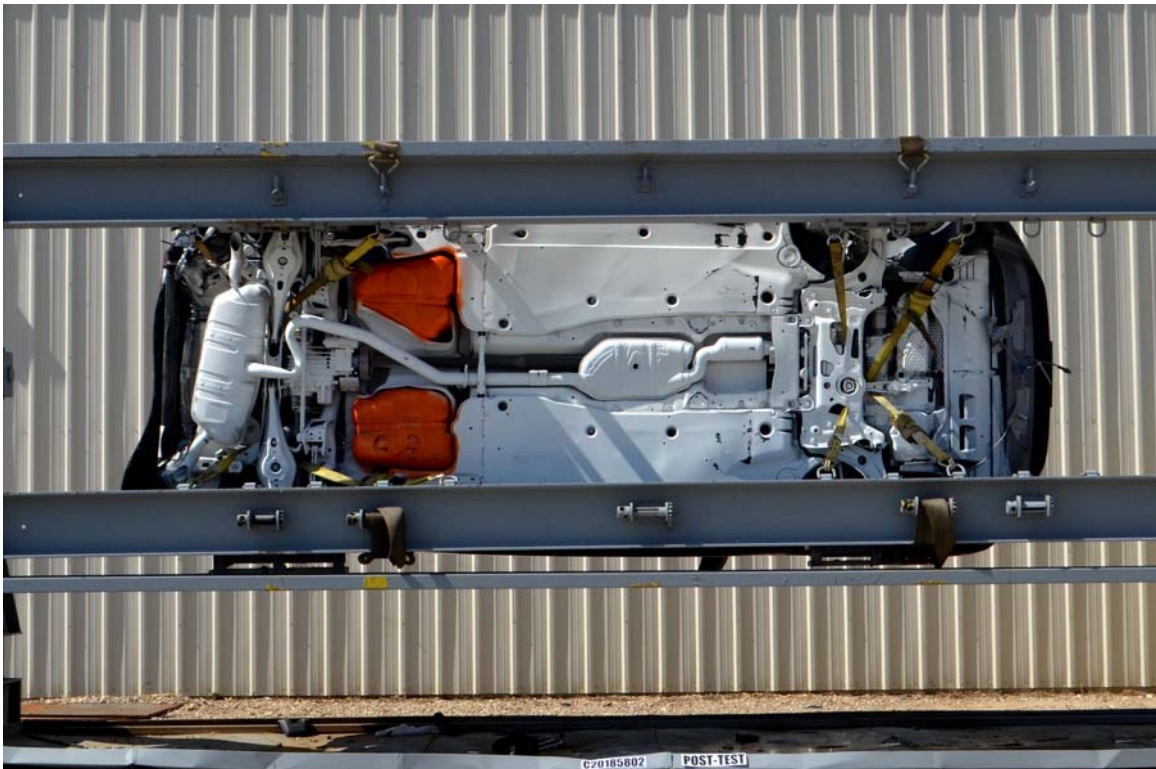


FIGURE 34. Test Vehicle at 270° on FMVSS 301 Static Rollover Device

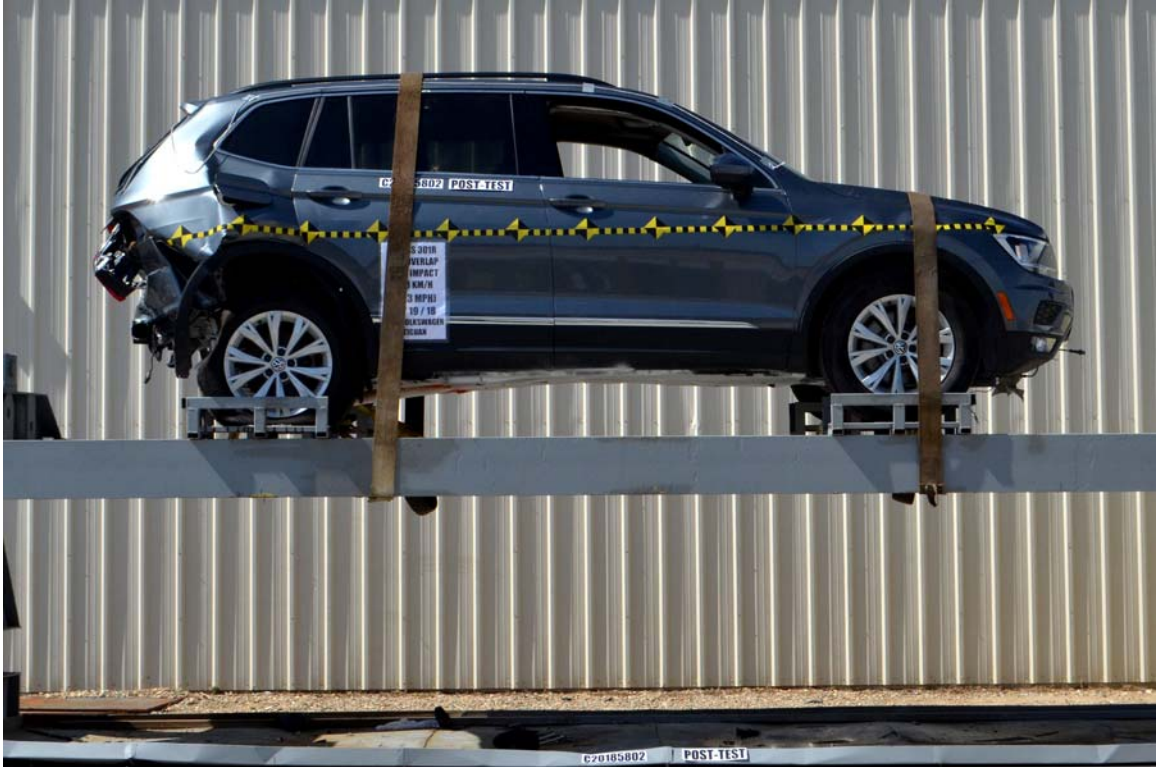


FIGURE 35. Test Vehicle at 360° on FMVSS 301 Static Rollover Device



FIGURE 36. Impact Event