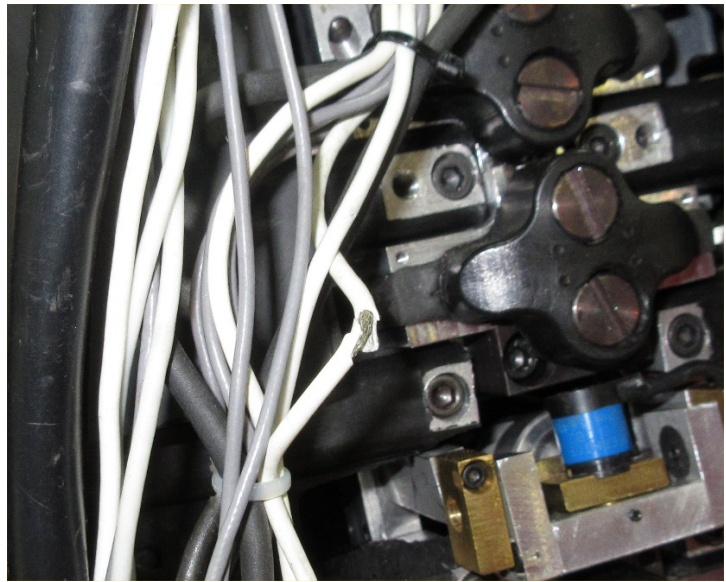
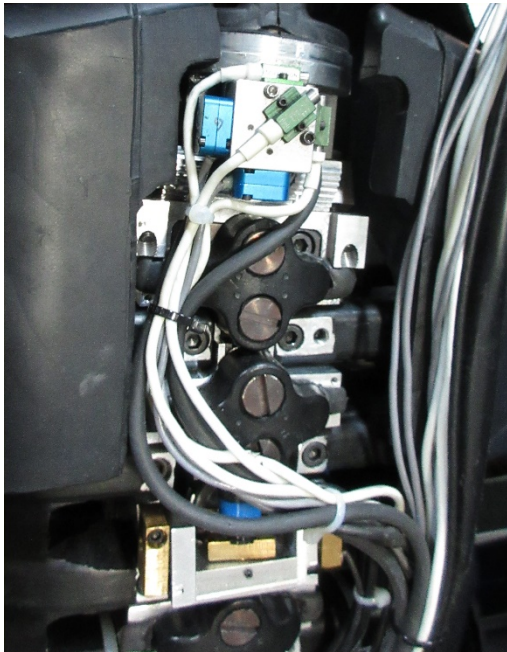


Damage Report for LODC 003

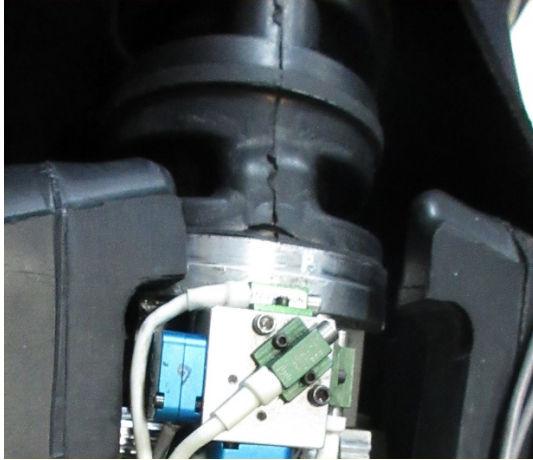
The LODC 003 needed both left and right leg skins replaced. The zippers are not working correctly.



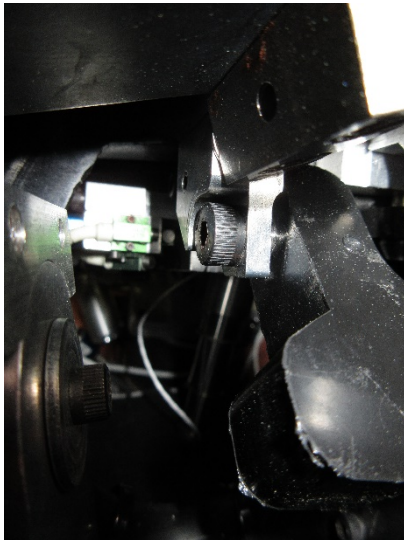
The IR-TRACC mounting bracket was badly bent and the brass ball was snapped off at the end of the IR-TRACC tube.



The accelerometer wires running down the back of the spine, have signs of interaction with a part of the spine. Maybe the black plastic Spine Link or the aluminum mounting bracket of the 3D IR-TRACC. We may need to revisit the wire routing down the back of the spine.



The neck is delaminating at the base, near the lower neck load cell. To replace the neck, will require qualifying the replacement neck, in the Dummy Lab with the Neck Pendulum.



A witness mark on the black rubber clavicle structure that mounts to the sternum of the chest (Lower right of the picture).

This and the damaged IR-TRACC, leads me to believe that the chest was fully compressed.

Patrick Biondillo 12/12/19