



A-1

TR-P27143-01-NC

Figure A-1: Left Front $\frac{3}{4}$ View, as Received



Figure A-2: Right Rear $\frac{3}{4}$ View, as Received

MFD. BY MITSUBISHI MOTORS CORPORATION, JAPAN

GVWR 4079LBS/ 1850KG
GAWR FR 2227LBS/1010KG GAWR RR 2007LBS/ 910KG

MAY 2007

THIS VEHICLE CONFORMS TO ALL APPLICABLE
FEDERAL MOTOR VEHICLE SAFETY, BUMPER, AND
THEFT PREVENTION STANDARDS IN EFFECT ON
THE DATE OF MANUFACTURE SHOWN ABOVE.

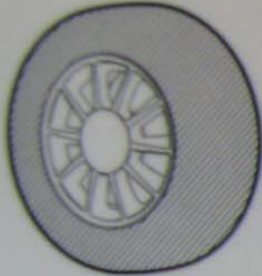


JA3AU26U48U018938

VEHICLE TYPE: PASSENGER CAR

MU000**883**

Figure A-3: Manufacturer's Label



TIRE AND LOADING INFORMATION

SEATING CAPACITY | TOTAL 5 | FRONT 2 | REAR 3

The combined weight of occupants and cargo should never exceed 375 kg or 827 lbs

TIRE	SIZE	COLD TIRE PRESSURE	SEE OWNER'S MANUAL FOR ADDITIONAL INFORMATION
FRONT	P205/60R16	220KPA, 32PSI	
REAR	P205/60R16	220KPA, 32PSI	
SPARE	T125/70D16	420KPA, 60PSI	

PART NO. 7430A504 S

Figure A-4: Tire Placard



Figure A-5: Pre-Test Front View



Figure A-6: Post-Test Front View



Figure A-7: Pre-Test Left Front ¾ View



Figure A-8: Post-Test Left Front $\frac{3}{4}$ View



Figure A-9: Pre-Test Left Side View



Figure A-10: Post-Test Left Side View



Figure A-11: Pre-Test Left Rear $\frac{3}{4}$ View



Figure A-12: Post-Test Left Rear $\frac{3}{4}$ View



Figure A-13: Pre-Test Rear View



Figure A-14: Post-Test Rear View



Figure A-15: Pre-Test Right Rear ¾ View



A-16

TR-P27143-01-NC

Figure A-16: Post-Test Right Rear $\frac{3}{4}$ View



Figure A-17: Pre-Test Right Side View



Figure A-18: Post-Test Right Side View



Figure A-19: Pre-Test Right Front 3/4 View



A-20

TR-P27143-01-NC

Figure A-20: Post-Test Right Front $\frac{3}{4}$ View



Figure A-21: Pre-Test Overhead View



Figure A-22: Post-Test Overhead View



Figure A-23: Pre-Test Overhead Close-up View



Figure A-24: Post-Test Overhead Close-up View



Figure A-25: Pre-Test Left Impact Point

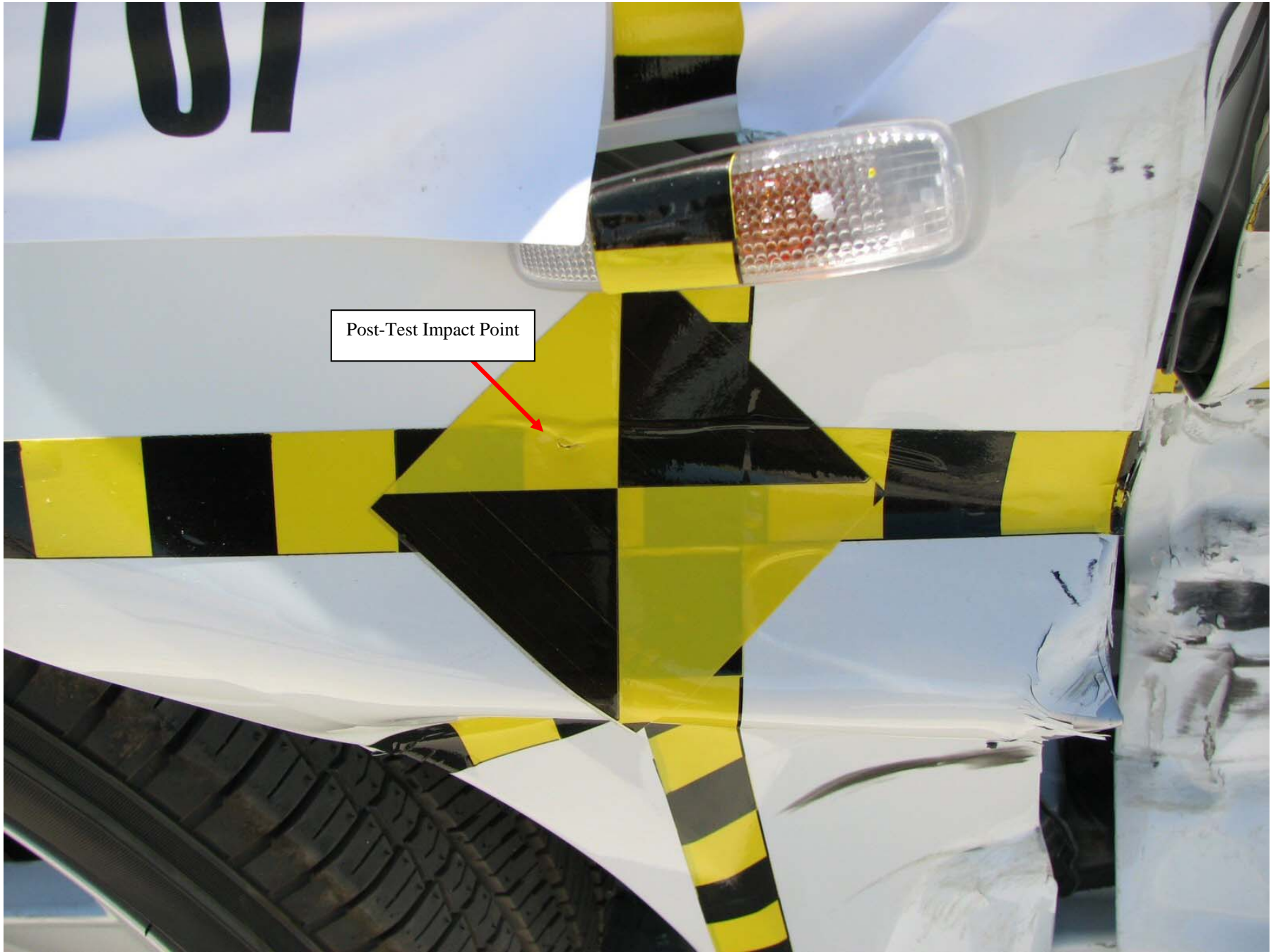


Figure A-26: Post-Test Left Impact Point



Figure A-27: Pre-Test Front ¾ View of Left Side Door



Figure A-28: Post-Test Front ¾ View of Left Side Door



Figure A-29: Pre-Test Rear $\frac{3}{4}$ View of Left Side Door



Figure A-30: Post-Test Rear ¾ View of Left Side Door



Figure A-31: Pre-Test Left Front Door



Figure A-32: Post-Test Left Front Door



Figure A-33: Pre-Test Left Rear Door



Figure A-34: Post-Test Left Rear Door



Figure A-35: Pre-Test Driver Dummy (Door Open)

This Space Intentionally Left Blank



Figure A-36: Pre-Test Driver Dummy (Through Window)



Figure A-37: Post-Test Driver Dummy (Through Window)



Figure A-38: Pre-Test Driver Dummy Clearance From Door



Figure A-39: Post-Test Driver Dummy Clearance From Door



Figure A-40: Pre-Test Driver Dummy Right Side View



Figure A-42: Pre-Test Front Door Panel (Interior)



Figure A-43: Post-Test Front Door Panel (Interior)



Figure A-44: Pre-Test Passenger Dummy Left Side (Door Open)

This Space Intentionally Left Blank



Figure A-45: Pre-Test Passenger Dummy Left Side (Through Window)



Figure A-46: Post-Test Passenger Dummy Left Side (Through Window)



Figure A-47: Pre-Test Passenger Dummy Clearance From Door



Figure A-48: Post-Test Passenger Dummy Clearance From Door



Figure A-49: Pre-Test Passenger Dummy Right Side View



Figure A-50: Post-Test Passenger Dummy Right Side View



A-51

TR-P27143-01-NC

Figure A-51: Pre-Test Rear Door Panel (Interior)



Figure A-52: Post-Test Rear Door Panel (Interior)



Figure A-53: Pre-Test Front View of Deformable Barrier

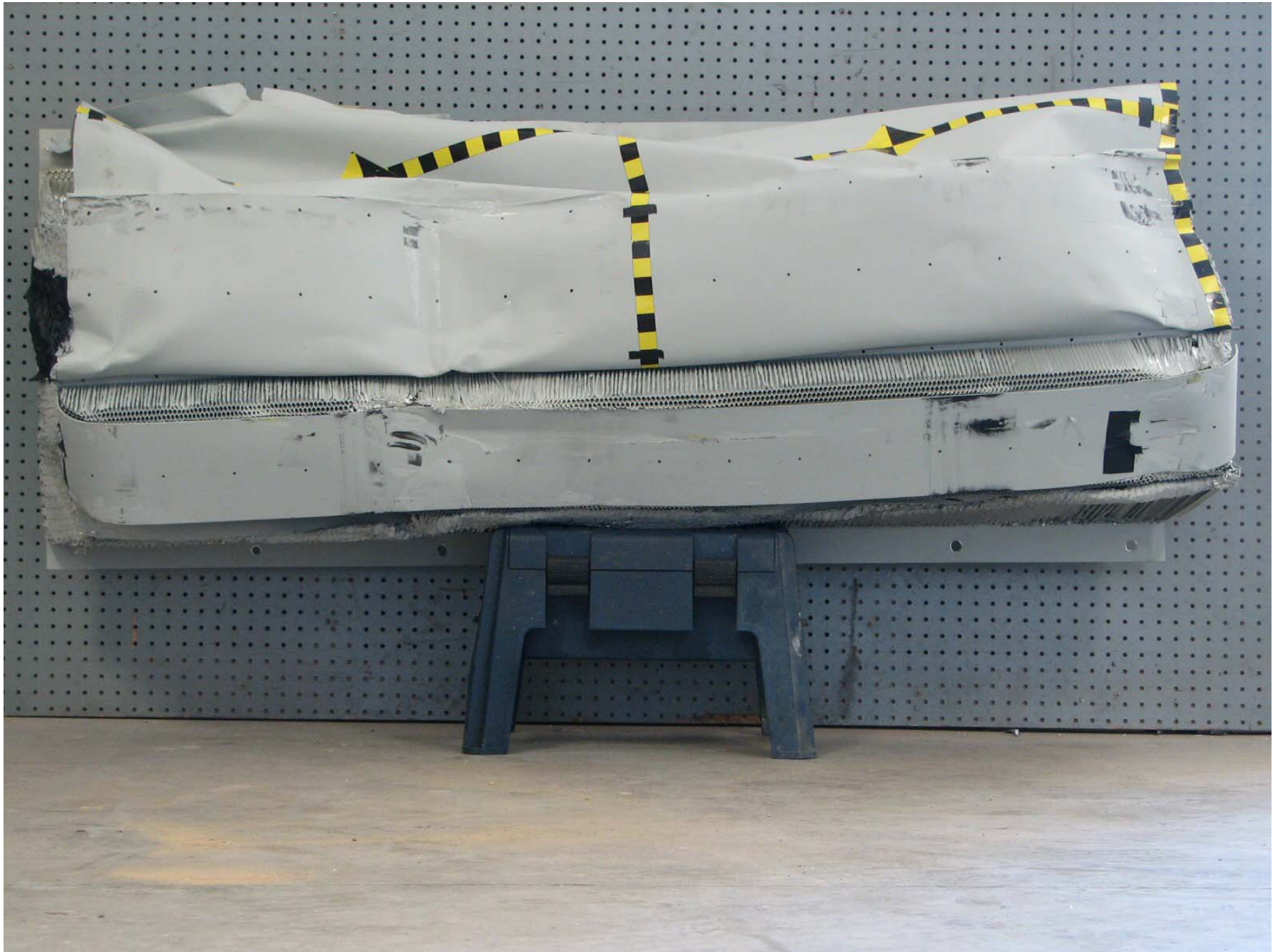


Figure A-54: Post-Test Front View of Deformable Barrier



A-55

TR-P27143-01-NC

Figure A-55: Pre-Test Top View of Deformable Barrier

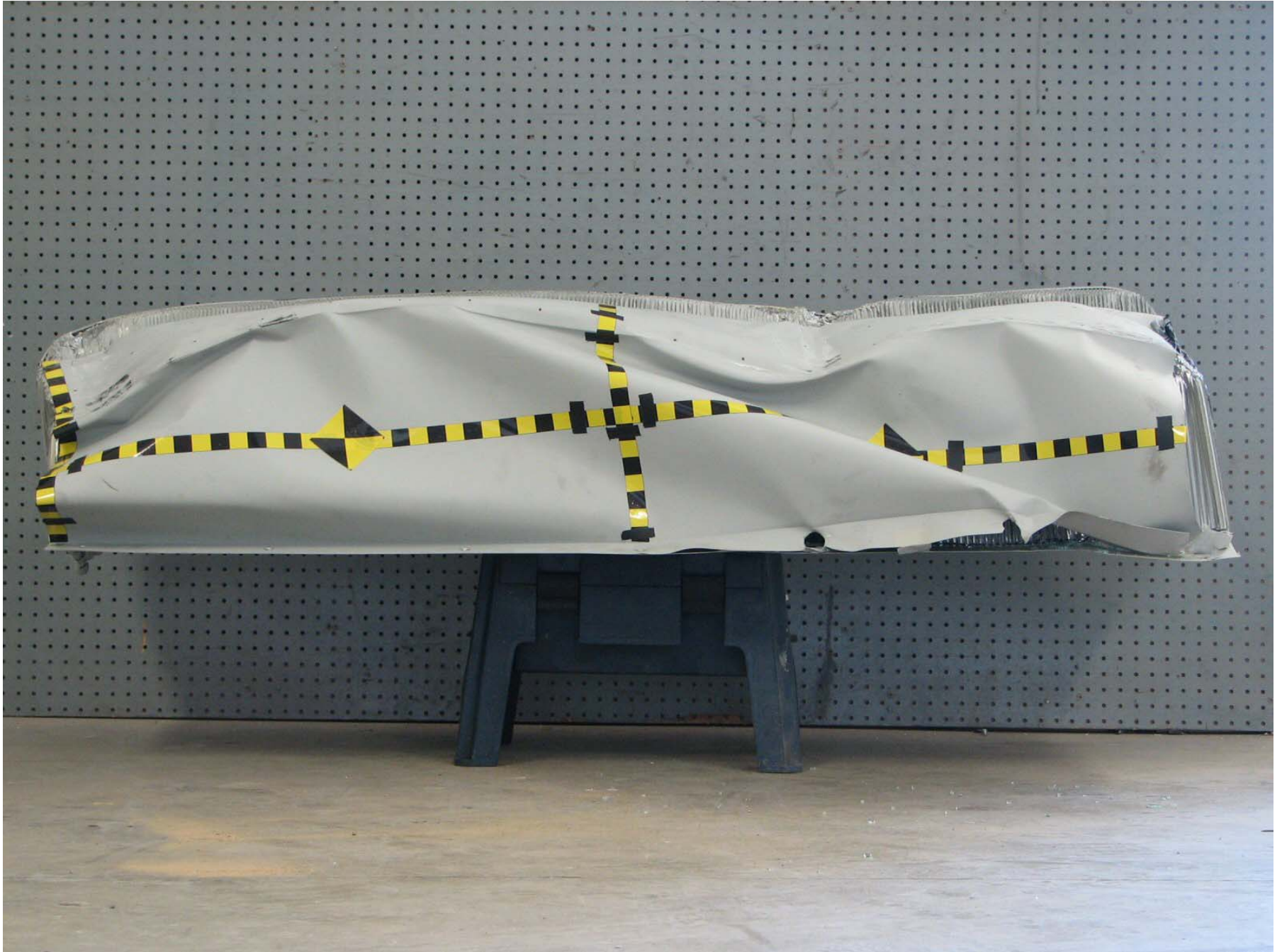


Figure A-56: Post-Test Top View of Deformable Barrier



Figure A-57: Pre-Test Right Side View of Deformable Barrier



Figure A-58: Post-Test Right Side View of Deformable Barrier

A-59

TR-P27143-01-NC



Figure A-59: Pre-Test Left Side View of Deformable Barrier



Figure A-60: Post-Test Left Side View of Deformable Barrier

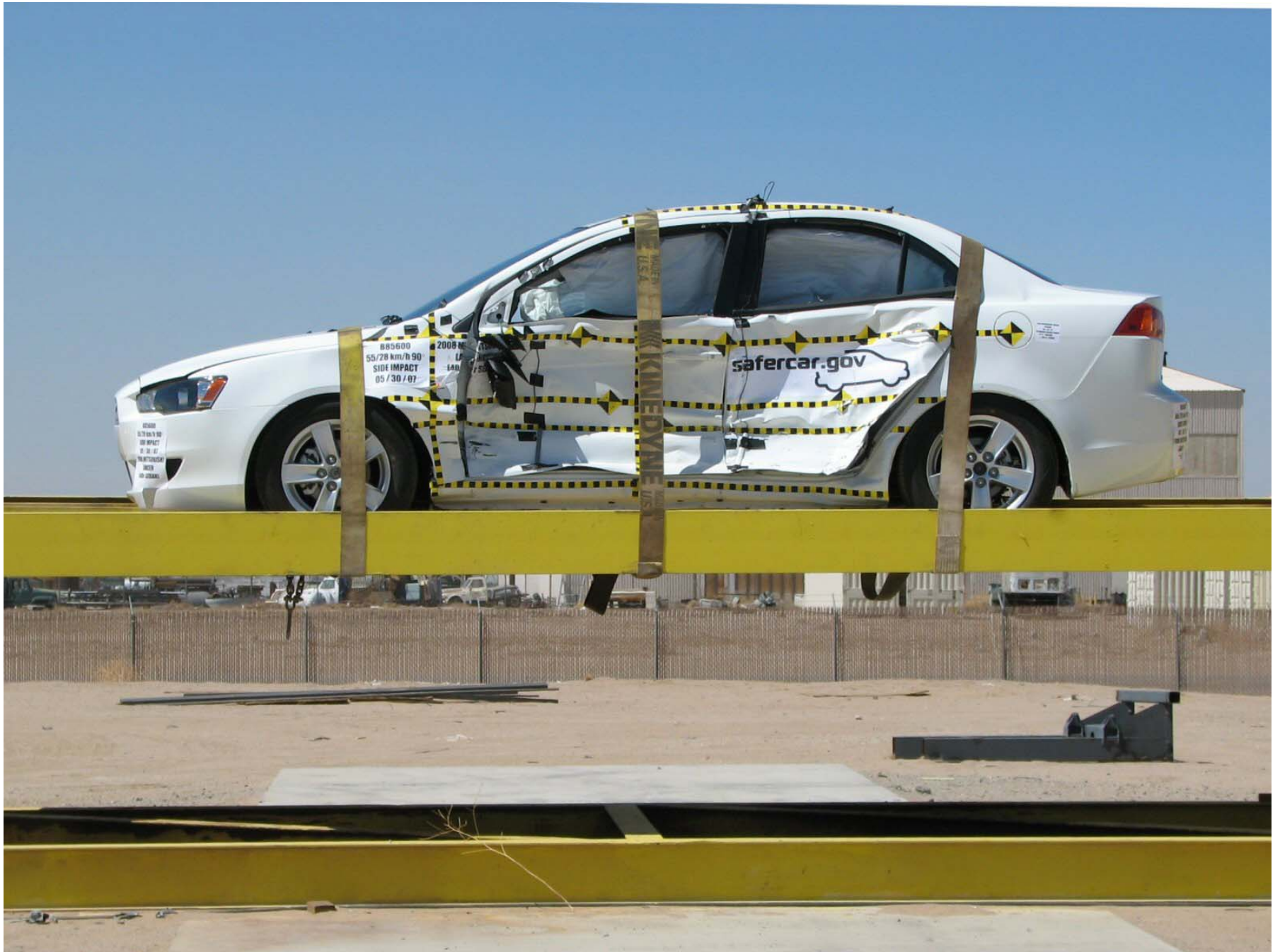


Figure A-61: Vehicle on Rollover Device (0°)



Figure A-62: Vehicle on Rollover Device (90°)



Figure A-63: Vehicle on Rollover Device (180°)

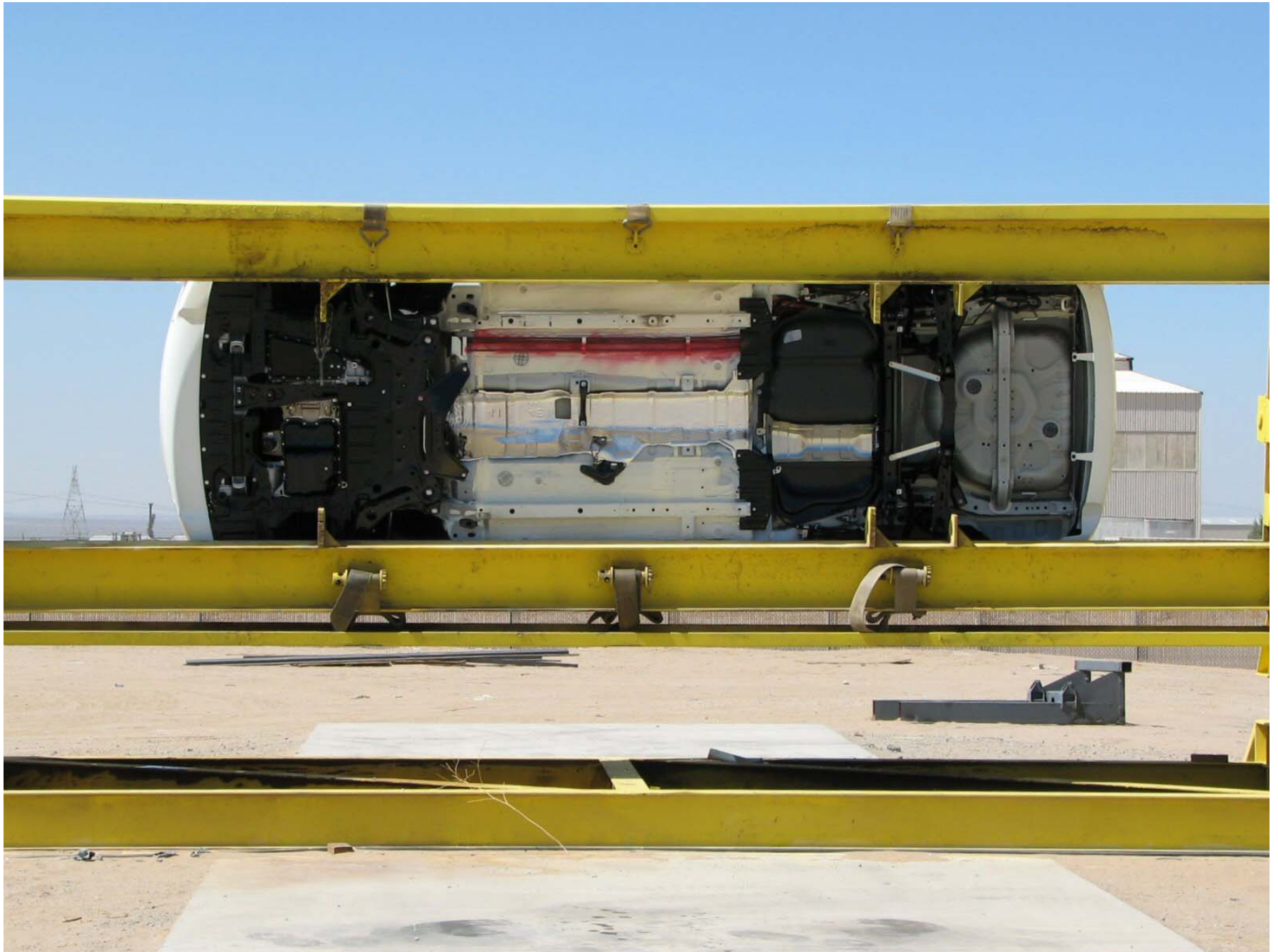


Figure A-64: Vehicle on Rollover Device (270°)

A-64

TR-P27143-01-NC



A-65

TR-P27143-01-NC

Figure A-65: Vehicle Impact