



A-1

TR-P27003-10-NC

Figure A-1: Left Front $\frac{3}{4}$ View, as Received



Figure A-2: Right Rear $\frac{3}{4}$ View, as Received

MFD. BY: TOYOTA MOTOR CORPORATION

04/07

GVWR: 1860KG (4105LB)

GAWR: FRT. 1030KG (2270LB) WITH P205/55R16 TIRES,
16X6 1/2J RIMS, AT 240KPA (35PSI) COLD.

RR. 855KG (1880LB) WITH P205/55R16 TIRES,
16X6 1/2J RIMS, AT 220KPA (32PSI) COLD.

THIS VEHICLE CONFORMS TO ALL APPLICABLE FEDERAL MOTOR
VEHICLE SAFETY AND THEFT PREVENTION STANDARDS IN EFFECT ON
THE DATE OF MANUFACTURE SHOWN ABOVE.

JTLKE50E281001468 MPV



C/TR: 1F7/FA10
A/TM: -01A/E351

AZE151L-FHMNKA
MADE IN JAPAN

034



Figure A-3: Manufacturer's Label



TIRE AND LOADING INFORMATION

SEATING CAPACITY : TOTAL 5
FRONT 2 : REAR 3
The combined weight of occupants and cargo should never exceed 385 kg or 850 lbs.

INFORMATION SUR LES PNEUS ET LE CHARGEMENT

NOMBRE DE PLACES ASSISES : TOTAL 5
AVANT 2 : ARRIÈRE 3
Le poids total des occupants et du chargement ne doit jamais être supérieur à 385 kg ou 850 lb.

SEE OWNER'S MANUAL FOR ADDITIONAL INFORMATION.

TIRE	SIZE	COLD TIRE PRESSURE
FRONT	P205/55R16	240kPa, 35PSI
REAR	P205/55R16	220kPa, 32PSI
SPARE	T135/70D17	420kPa, 60PSI

PNEUS	DIMENSION	PRESSION DE GONFLAGE À FROID
AVANT	P205/55R16	240kPa, 35PSI
ARRIÈRE	P205/55R16	220kPa, 32PSI
SECOURS	T135/70D17	420kPa, 60PSI

POUR DE PLUS AMPLES INFORMATIONS, VOIR LE MANUEL DU PROPRIÉTAIRE.

C 3^{12E50}

Figure A-4: Tire Placard



Figure A-5: Pre-Test Front View



Figure A-6: Post-Test Front View



Figure A-7: Pre-Test Left Front $\frac{3}{4}$ View



Figure A-8: Post-Test Left Front $\frac{3}{4}$ View



Figure A-9: Pre-Test Left Side View



A-10

TR-P27003-10-NC

Figure A-10: Post-Test Left Side View



Figure A-11: Pre-Test Left Rear ¾ View



Figure A-12: Post-Test Left Rear ¾ View



Figure A-13: Pre-Test Rear View



Figure A-14: Post-Test Rear View



A-15

TR-P27003-10-NC

Figure A-15: Pre-Test Right Rear ¾ View



A-16

TR-P27003-10-NC

Figure A-16: Post-Test Right Rear $\frac{3}{4}$ View



Figure A-17: Pre-Test Right Side View



Figure A-18: Post-Test Right Side View



A-19

TR-P27003-10-NC

Figure A-19: Pre-Test Right Front ¾ View



Figure A-20: Post-Test Right Front $\frac{3}{4}$ View



Figure A-21: Pre-Test Overhead View



Figure A-22: Post-Test Overhead View

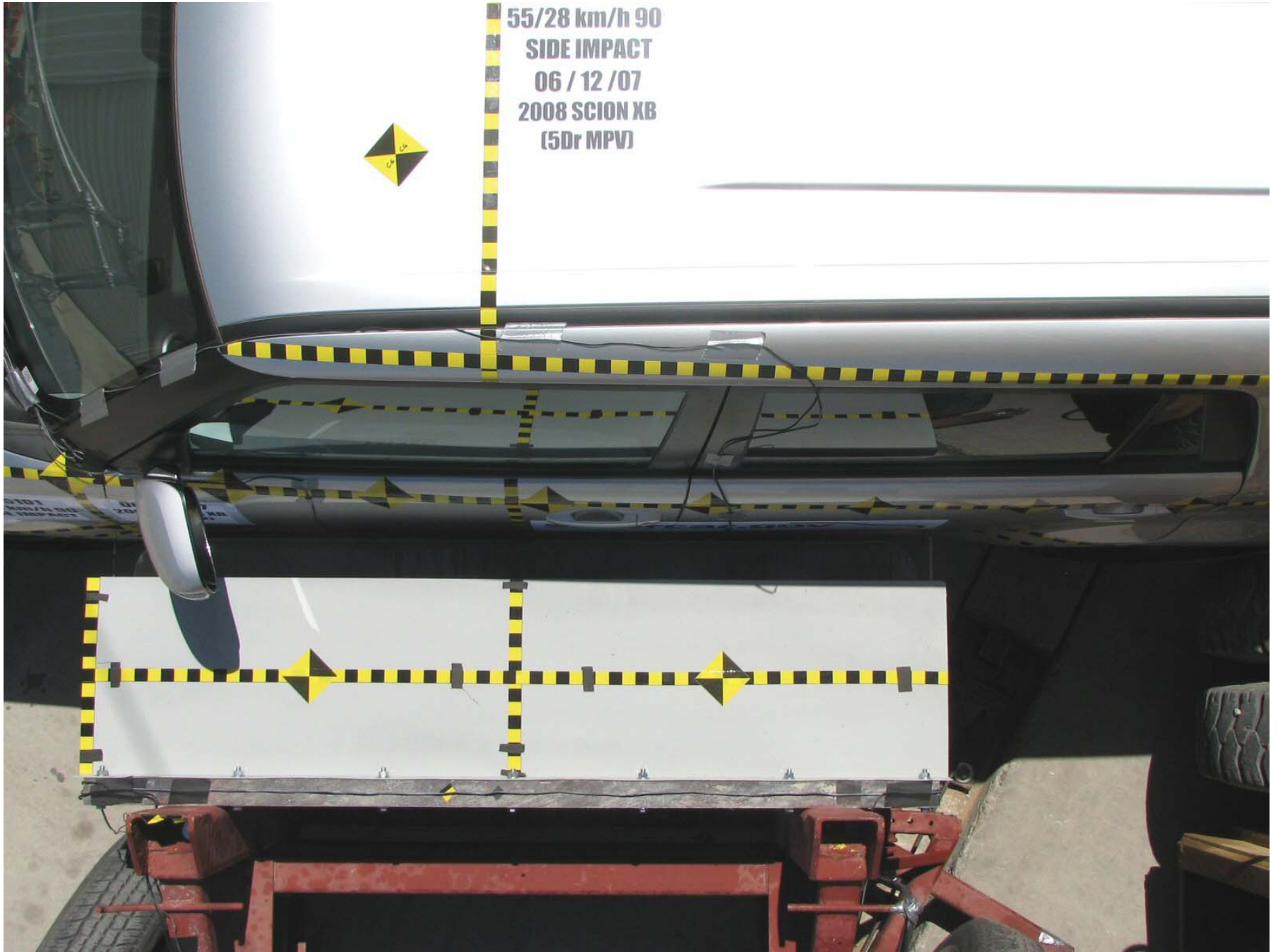


Figure A-23: Pre-Test Overhead Close-up View



M85101
55/28 km/h 90°
SIDE IMPACT
06 / 13 / 07
2008 SCION XB
(5Dr MPV)



Figure A-24: Post-Test Overhead Close-up View



Figure A-25: Pre-Test Left Impact Point

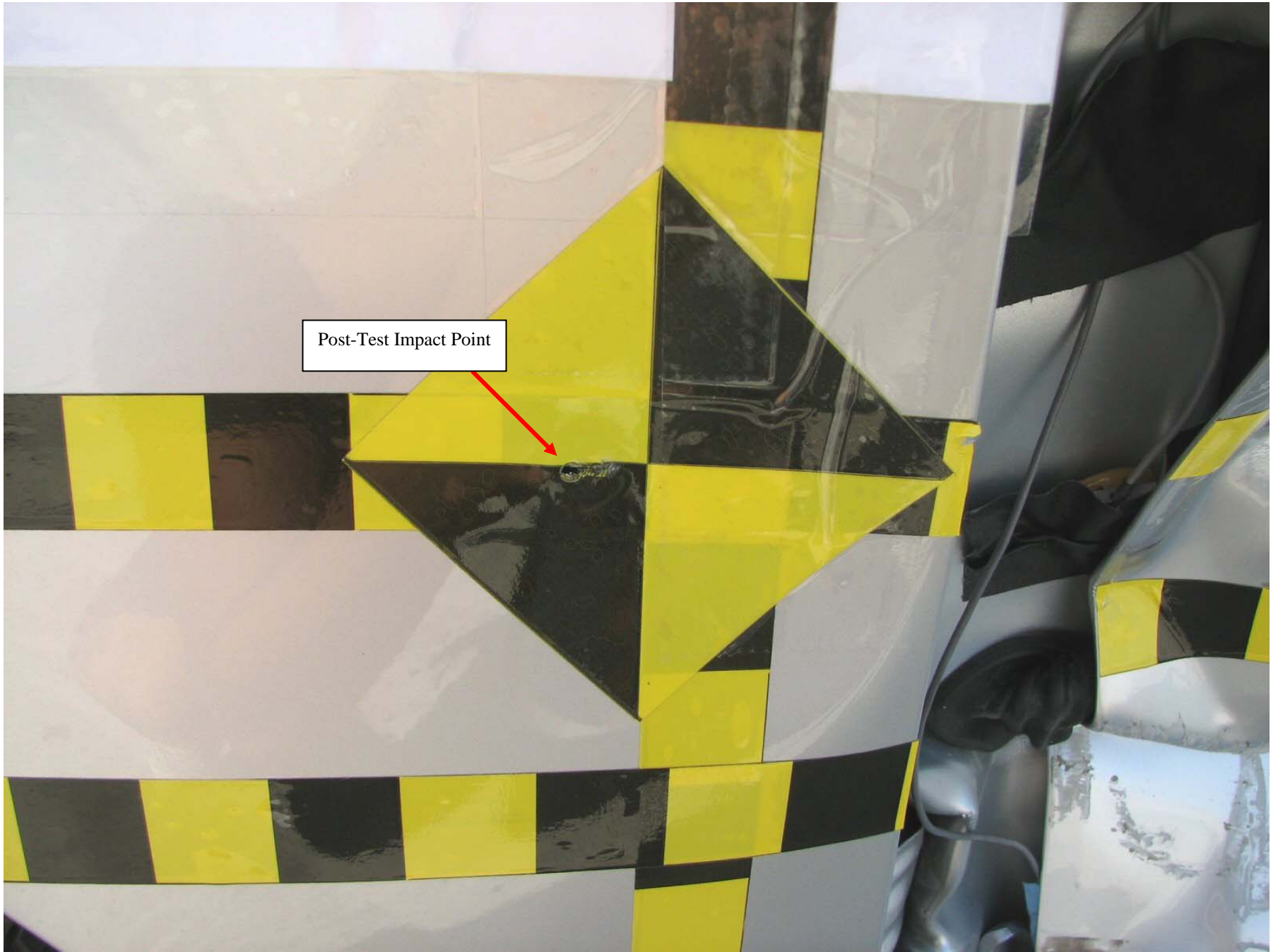


Figure A-26: Post-Test Left Impact Point



Figure A-27: Pre-Test Front ¾ View of Left Side Door



Figure A-28: Post-Test Front $\frac{3}{4}$ View of Left Side Door



Figure A-29: Pre-Test Rear $\frac{3}{4}$ View of Left Side Door



Figure A-30: Post-Test Rear ¾ View of Left Side Door



Figure A-31: Pre-Test Left Front Door



Figure A-32: Post-Test Left Front Door



Figure A-33: Pre-Test Left Rear Door



Figure A-34: Post-Test Left Rear Door



Figure A-35: Pre-Test Driver Dummy (Door Open)

This Space Intentionally Left Blank



Figure A-36: Pre-Test Driver Dummy (Through Window)



Figure A-37: Post-Test Driver Dummy (Through Window)



Figure A-38: Pre-Test Driver Dummy Clearance From Door



Figure A-39: Post-Test Driver Dummy Clearance From Door



Figure A-40: Pre-Test Driver Dummy Right Side View



Figure A-41: Post-Test Driver Dummy Right Side View



Figure A-42: Pre-Test Front Door Panel (Interior)



Figure A-43: Post-Test Front Door Panel (Interior)



Figure A-44: Pre-Test Passenger Dummy Left Side (Door Open)

This Space Intentionally Left Blank



Figure A-45: Pre-Test Passenger Dummy Left Side (Through Window)



Figure A-46: Post-Test Passenger Dummy Left Side (Through Window)



Figure A-47: Pre-Test Passenger Dummy Clearance From Door



Figure A-48: Post-Test Passenger Dummy Clearance From Door



Figure A-50: Post-Test Passenger Dummy Right Side View



Figure A-51: Pre-Test Rear Door Panel (Interior)



Figure A-52: Post-Test Rear Door Panel (Interior)



Figure A-53: Pre-Test Front View of Deformable Barrier



Figure A-54: Post-Test Front View of Deformable Barrier



A-55

TR-P27003-10-NC

Figure A-55: Pre-Test Top View of Deformable Barrier

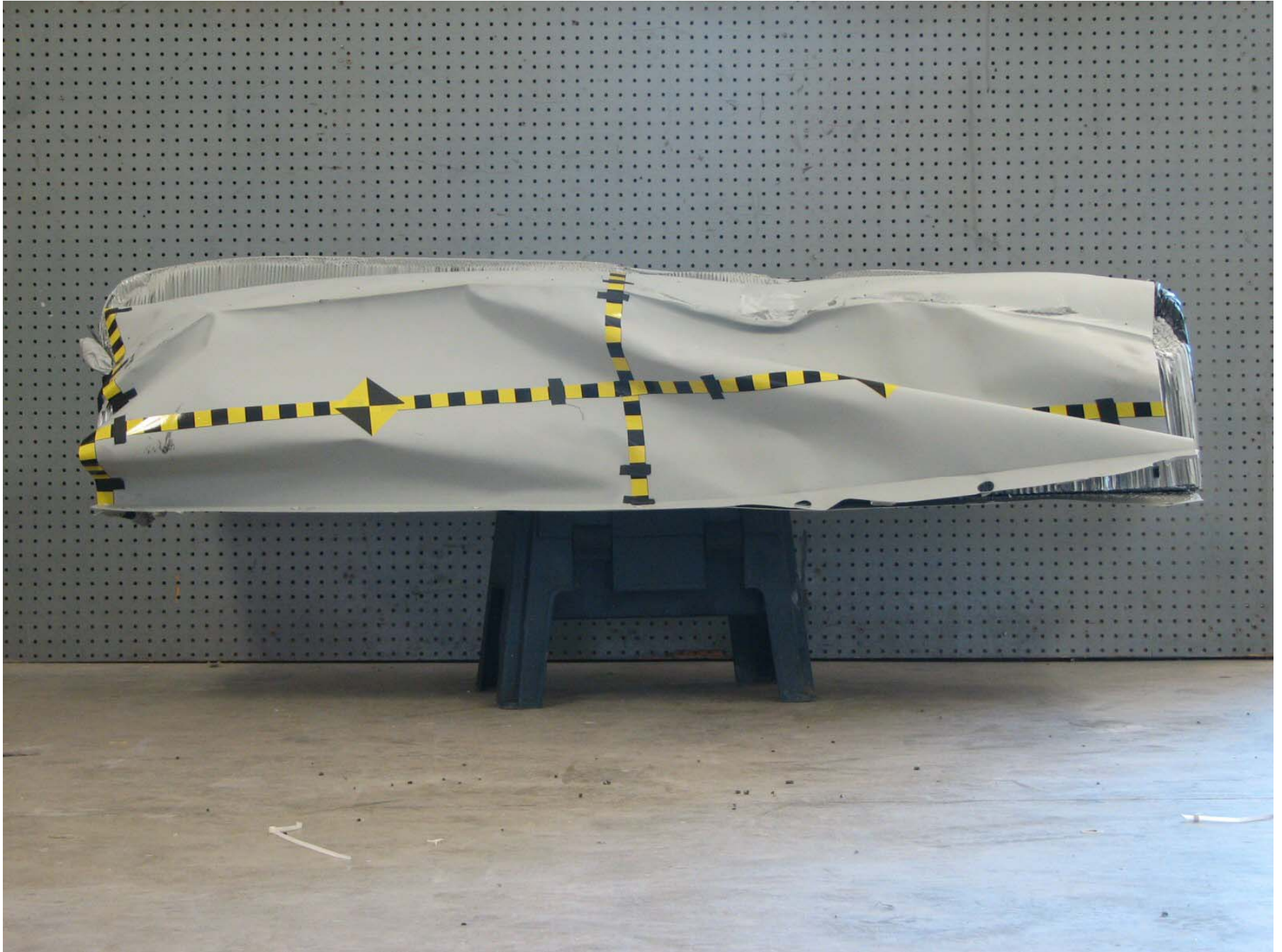


Figure A-56: Post-Test Top View of Deformable Barrier



Figure A-57: Pre-Test Right Side View of Deformable Barrier



Figure A-58: Post-Test Right Side View of Deformable Barrier

A-59

TR-P27003-10-NC



Figure A-59: Pre-Test Left Side View of Deformable Barrier



Figure A-60: Post-Test Left Side View of Deformable Barrier



Figure A-61: Vehicle on Rollover Device (0°)



Figure A-62: Vehicle on Rollover Device (90°)



Figure A-63: Vehicle on Rollover Device (180°)

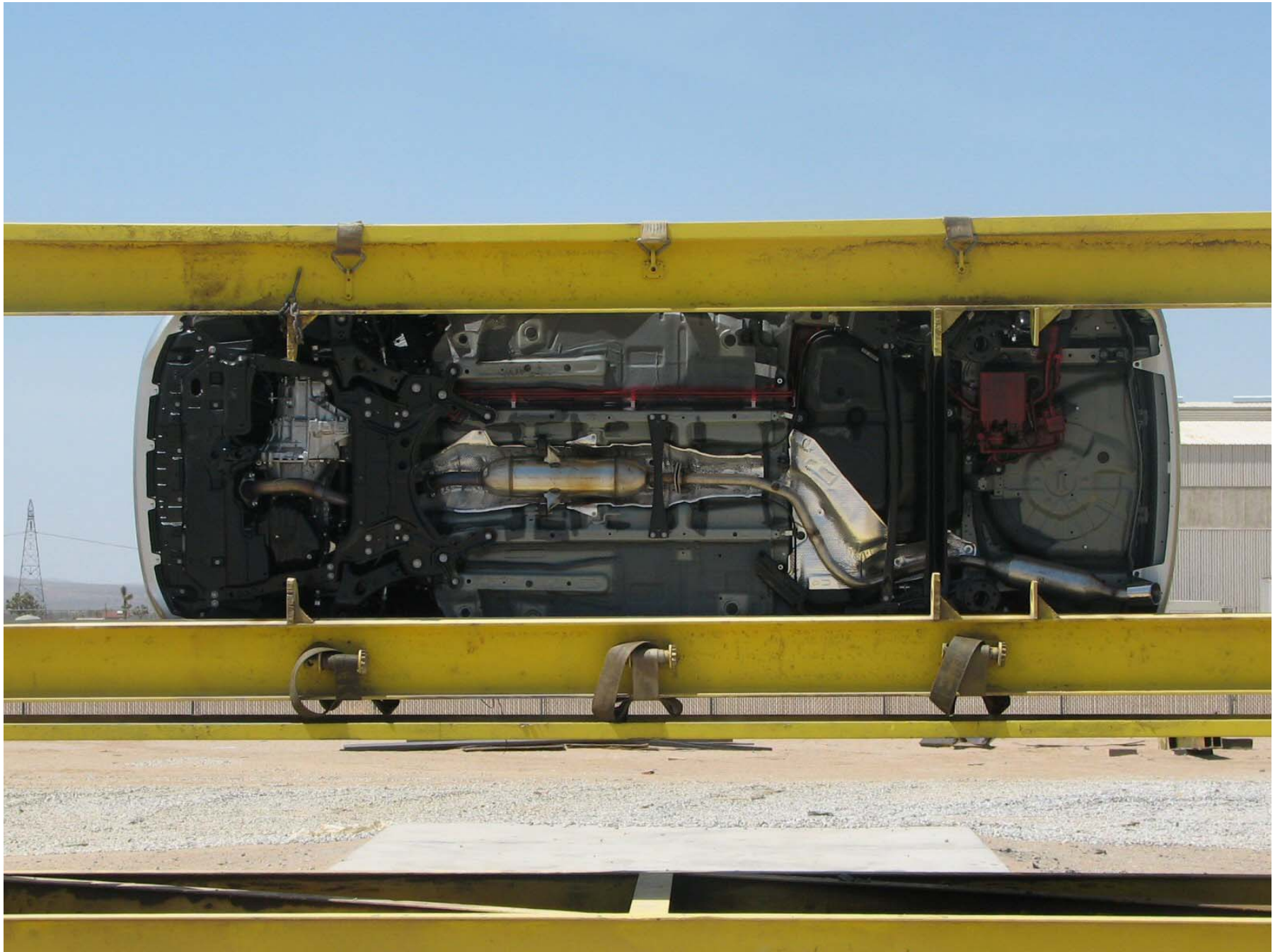


Figure A-64: Vehicle on Rollover Device (270°)

A-64

TR-P27003-10-NC



Figure A-65: Vehicle Impact