

060302 2006 Ford F250 into 2002 Ford Focus Full Frontal Collinear

Bullet Vehicle: 2006 Ford F250 with SEAS

Dummy: HIII 50th Male

Position: Front left

	T1(Begin)	T2(End)	Avg. g T1 to T2	
1. HIC[Max]=	307.06	78.96	115.36	37.24
HIC[36]=	307.05	79.04	114.80	37.51
HIC[15]=	225.09	91.68	106.72	47.00

2. CLIP [3 ms] =35.25g

T1 (Begin): 74.69ms

T2 (End): 77.69ms

3. Chest Deflection

Max = 0.10 mm at 36.96 ms

Min = -26.07 mm at 91.44 ms

4. NIJ Calculation

Max[NIJ] = 0.21 at 93.28 ms

Max[NTE] =0.16 at 74.40 mSec.

Max[NTF] =0.21 at 93.28 mSec.

Max[NCE] =0.03 at 44.88 mSec.

Max[NCF] =0.01 at 22.32 mSec.

5. Neck Loads

Tension = 1120.23 N at 93.20 ms

Compression = -98.79 N at 44.80 ms

6. Femur Loads

Right

Max [Tension] 277.40 N at 49.84 ms

Min [Compression] -989.56 N at 66.00 ms

Left

Max [Tension] 156.03 N at 291.12 ms

Min [Compression] -3593.53 N at 74.40 ms

7. Tibia Index

Upper Right Max = 0.43 at 72.32 ms

Lower Right Max = 0.34 at 54.24 ms

Upper Left Max = 0.43 at 62.64 ms

Lower Left Max = 0.36 at 63.28 ms

8. Tibia Loads

Upper Right Max = 371.26 at 50.16 ms Min = -204.72 at 62.56 ms

Lower Right Max = 74.36 at 171.04 ms Min = -482.98 at 72.24 ms

Upper Left Max = 139.65 at 51.28 ms Min = -580.66 at 77.44 ms

Lower Left Max = 212.83 at 98.48 ms Min = -115.14 at 51.36 ms

9. Knee Shear

Left Max= 0.59 at 195.12 ms Min = -5.16 at 89.68 ms

Right Max = 0.65 at 103.12 ms Min = -2.00 at 64.48 ms

10. Ankle

Left Inversion/Eversion Max= 26.41 at 88.80 ms Min = 6.49 at -10.32 ms

Left Dorsiflexion Max = 163.38 at 59.44 ms Min = -41.67 at 302.48 ms

Right Inversion/Eversion Max= 2.58 at 218.96 ms Min = -24.12 at 70.96 ms

Right Dorsiflexion Max = 18.77 at 45.60 ms Min = -5.80 at 84.08 ms

060302 2006 Ford F250 into 2002 Ford Focus Full Frontal Collinear

Bullet Vehicle: 2006 Ford F250 with SEAS

Dummy: HIII 5th Female

Position: Front right

	T1(Begin)	T2(End)	Avg. g T1 to T2	
1. HIC[Max]=	424.84	77.92	127.76	37.38
HIC[36]=	403.14	89.04	125.04	41.72
HIC[15]=	309.21	104.96	120.00	53.35

2. CLIP [3 ms] =38.13g

T1 (Begin): 76.78ms

T2 (End): 79.78ms

3. Chest Deflection

Max = 0.05 mm at 28.88 ms

Min = -21.31 mm at 90.48 ms

4. NIJ Calculation

Max[NIJ] = 0.41 at 274.08 ms

Max[NTE] =0.37 at 80.32 mSec.

Max[NTF] =0.24 at 106.56 mSec.

Max[NCE] =0.41 at 274.08 mSec.

Max[NCF] =0.01 at 25.52 mSec.

5. Neck Loads

Tension = 767.35 N at 82.48 ms

Compression = -470.90 N at 242.32 ms

6. Femur Loads

Right

Max [Tension] 1156.11 N at 72.72 ms

Min [Compression] -72.02 N at 170.56 ms

Left

Max [Tension] 1083.03 N at 78.24 ms

Min [Compression] -127.38 N at 160.00 ms

7. Tibia Index

NA

8. Tibia Loads:

NA

9. Knee Shear

NA

10. Ankle

NA

060302 2006 Ford F250 into 2002 Ford Focus Full Frontal Collinear

Target Vehicle: 2002 Ford Focus

Dummy: HIII 50th Male

Position: Front left

	T1(Begin)	T2(End)	Avg. g T1 to T2	
1. HIC[Max]=	1500.11	70.40	105.84	70.99
HIC[36]=	1500.11	70.40	105.84	70.99
HIC[15]=	1023.04	80.56	95.60	86.15

2. CLIP [3 ms] =85.75g
T1 (Begin): 80.01ms
T2 (End): 83.01ms

3. Chest Deflection
Max = 0.01 mm at -9.28 ms
Min = -71.51 mm at 80.80 ms

4. NIJ Calculation
Max[NIJ] = 0.88 at 81.12 ms
Max[NTE] =0.88 at 81.12 mSec.
Max[NTF] =0.18 at 103.04 mSec.
Max[NCE] =0.25 at 241.36 mSec.
Max[NCF] =0.10 at 171.52 mSec.

5. Neck Loads
Tension = 3840.46 N at 81.04 ms
Compression = -568.02 N at 118.48 ms

6. Femur Loads
Right
Max [Tension] 873.82 N at 40.08 ms
Min [Compression] -7175.36 N at 67.20 ms
Left
Max [Tension] 802.09 N at 44.72 ms
Min [Compression] -6538.92 N at 77.36 ms

7. Tibia Index
Upper Right Max = 1.36 at 84.32 ms
Lower Right Max = 1.13 at 86.32 ms
Upper Left Max = 0.48 at 56.48 ms
Lower Left Max = 0.53 at 55.36 ms

8. Tibia Loads
Upper Right Max = 1111.07 at 48.96 ms Min = -2114.69 at 75.12 ms
Lower Right Max = 1352.39 at 84.88 ms Min = -909.02 at 49.36 ms
Upper Left Max = 999.64 at 55.60 ms Min = -580.66 at 69.36 ms
Lower Left Max = 371.98 at 69.68 ms Min = -854.92 at 55.92 ms

9. Knee Shear
Left Max= 1.59 at 54.08 ms Min = -3.41 at 89.04 ms
Right Max = 1.15 at 297.52 ms Min = -13.73 at 89.12 ms

10. Ankle
Left Inversion/Eversion Max= -2.92 at 8.72 ms Min = -28.62 at 107.20 ms
Left Dorsiflexion Max = 11.32 at 15.12 ms Min = -21.15 at 94.24 ms
Right Inversion/Eversion Max= 35.02 at 103.60 ms Min = 1.76 at -18.80 ms
Right Dorsiflexion Max = 13.50 at 47.44 ms Min = -22.30 at 83.60 ms

060302 2006 Ford F250 into 2002 Ford Focus Full Frontal Collinear

Target Vehicle: 2002 Ford Focus

Dummy: HIII 5th Female

Position: Front right

	T1(Begin)	T2(End)	Avg. g T1 to T2	
1. HIC[Max]=	1068.27	53.44	83.20	66.48
HIC[36]=	1068.27	53.44	83.20	66.48
HIC[15]=	887.21	65.44	80.48	81.31

2. CLIP [3 ms] =57.77g

T1 (Begin): 84.09ms

T2 (End): 87.09ms

3. Chest Deflection

Max = 0.08 mm at 9.76 ms

Min = -30.67 mm at 66.56 ms

4. NIJ Calculation

Max[NIJ] = 0.59 at 66.56 ms

Max[NTE] =0.59 at 66.56 mSec.

Max[NTF] =0.52 at 84.08 mSec.

Max[NCE] =0.48 at 131.68 mSec.

Max[NCF] =0.13 at 35.68 mSec.

5. Neck Loads

Tension = 1990.38 N at 79.12 ms

Compression = -510.54 N at 120.48 ms

6. Femur Loads

Right

Max [Tension] 367.19 N at 36.08 ms

Min [Compression] -5728.51 N at 62.64 ms

Left

Max [Tension] 313.55 N at 33.92 ms

Min [Compression] -4670.65 N at 70.64 ms

7. Tibia Index

Upper Right Max = 1.33 at 60.80 ms

Lower Right Max = 1.05 at 83.92 ms

Upper Left Max = 1.18 at 47.52 ms

Lower Left Max = 1.68 at 46.72 ms

8. Tibia Loads:

Upper Right Max = 651.22 at 47.04 ms Min = -1428.00 at 60.48 ms

Lower Right Max = 1099.73 at 60.48 ms Min = -461.83 at 46.96 ms

Upper Left Max = 136.62 at 60.08 ms Min = -208.01 at 69.92 ms

Lower Left Max = 76.15 at 92.96 ms Min = -1510.21 at 47.12 ms

9. Knee Shear

Left Max= 1.34 at 51.92 ms Min = -2.10 at 95.44 ms

Right Max = 8.65 at 62.00 ms Min = -1.00 at 47.68 ms

10. Ankle

Left Inversion/Eversion Max= 13.94 at 100.32 ms Min = -3.99 at 140.72 ms

Left Dorsiflexion Max = 37.71 at 73.60 ms Min = -15.23 at 44.88 ms

Right Inversion/Eversion Max= 18.84 at 106.56 ms Min = -9.87 at 52.40 ms

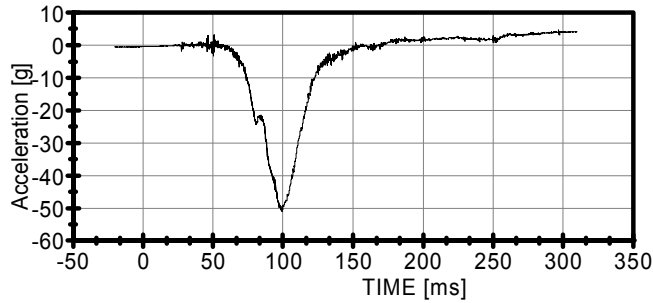
Right Dorsiflexion Max = 46.28 at 83.44 ms Min = -11.48 at 21.60 ms

Head Injury Criterion (HIC)

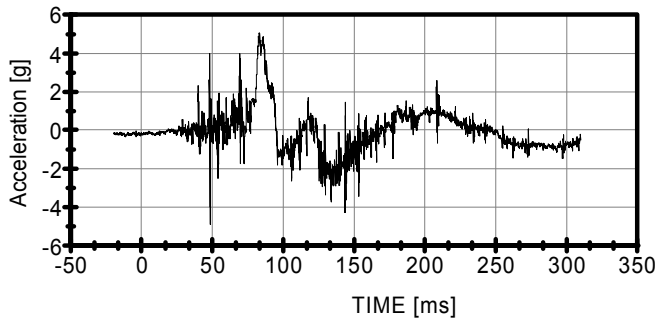
Date: 03/08/2006
Time: 14:59:26

Test Number: 060302 2006 Ford F250 into 2002 Ford Focus Full Frontal Collinear

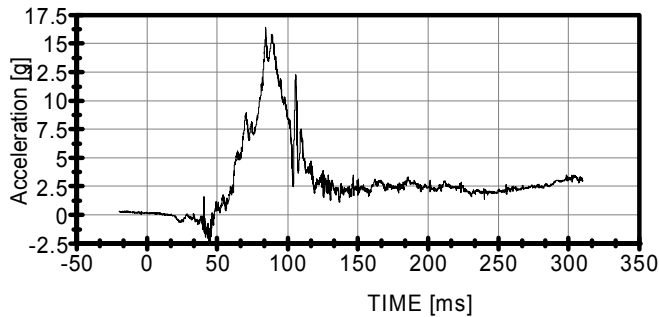
11HEADCG00H3ACXA



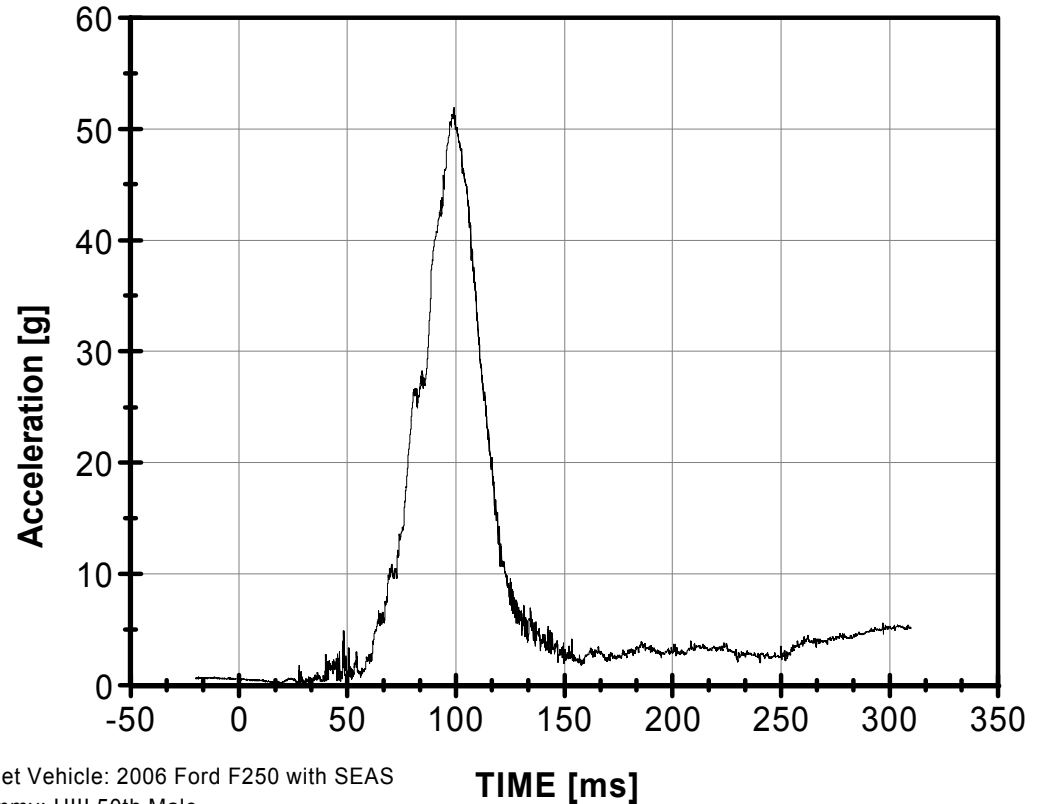
11HEADCG00H3ACYA



11HEADCG00H3ACZA



Head Resultant (11HEADCG00H3ACRA)



Bullet Vehicle: 2006 Ford F250 with SEAS
Dummy: HIII 50th Male
Position: Front left

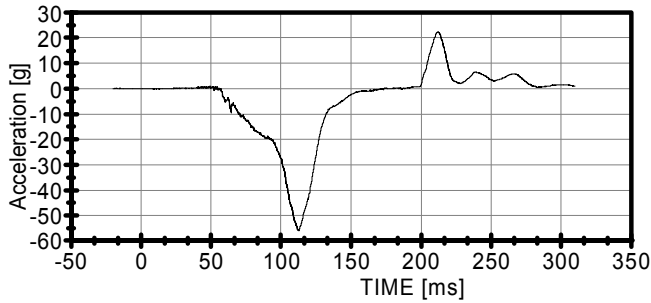
		T1(Begin)	T2(End)	
HIC[Max]=	307.06	78.96	115.36	37.24
HIC[36]=	307.05	79.04	114.80	37.51
HIC[15]=	225.09	91.68	106.72	47.00

Head Injury Criterion (HIC)

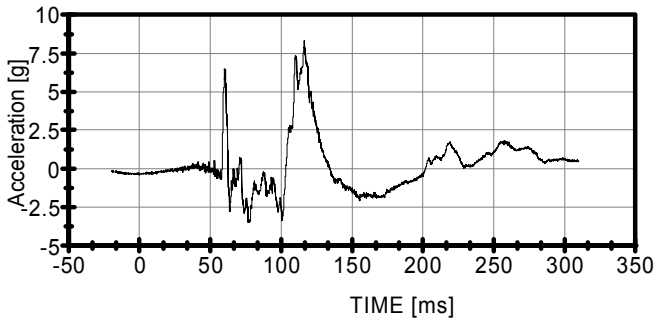
Date: 03/08/2006
Time: 14:59:26

Test Number: 060302 2006 Ford F250 into 2002 Ford Focus Full Frontal Collinear

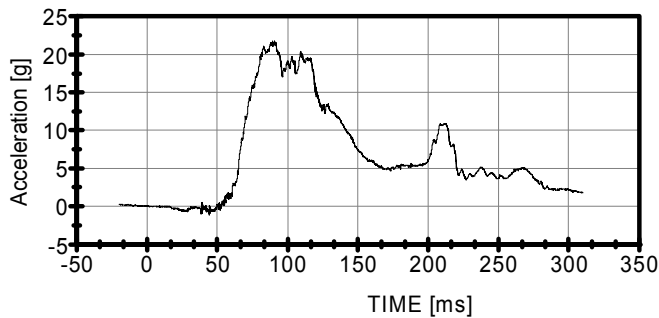
13HEADCG00HFACXA



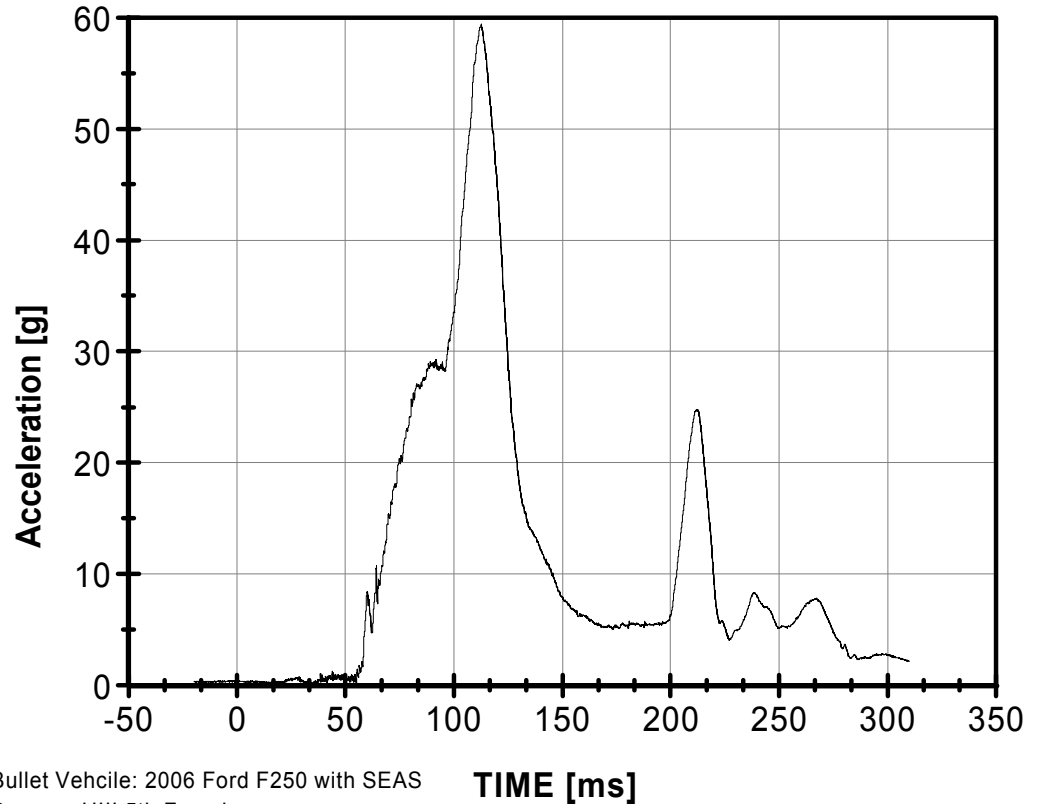
13HEADCG00HFACYA



13HEADCG00HFACZA



Head Resultant (13HEADCG00HFACRA)



Bullet Vehicle: 2006 Ford F250 with SEAS
Dummy: HIII 5th Female
Position: Front right

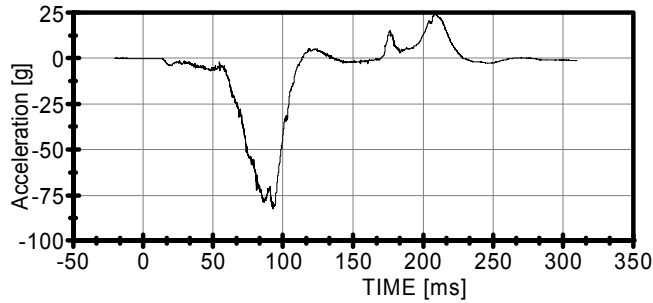
		T1(Begin)	T2(End)	
HIC[Max]=	424.84	77.92	127.76	37.38
HIC[36]=	403.14	89.04	125.04	41.72
HIC[15]=	309.21	104.96	120.00	53.35

Head Injury Criterion (HIC)

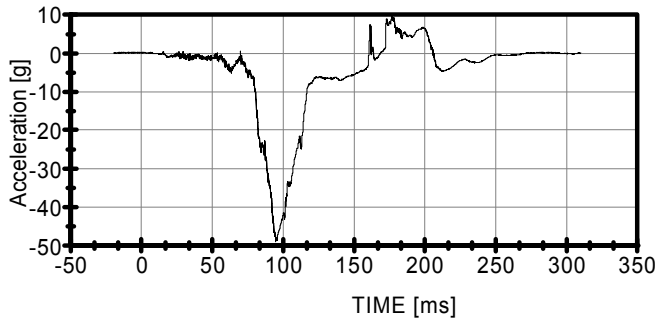
Date: 03/08/2006
Time: 14:59:26

Test Number: 060302 2006 Ford F250 into 2002 Ford Focus Full Frontal Collinear

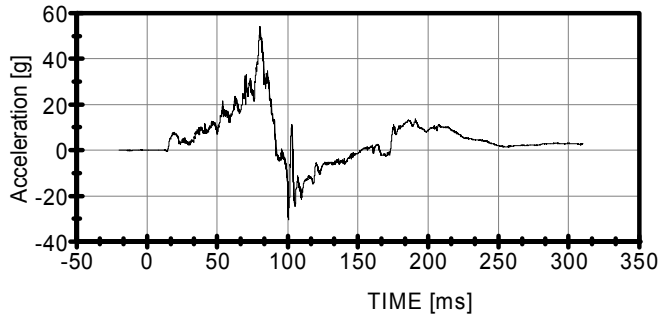
21HEADCG00H3ACXA



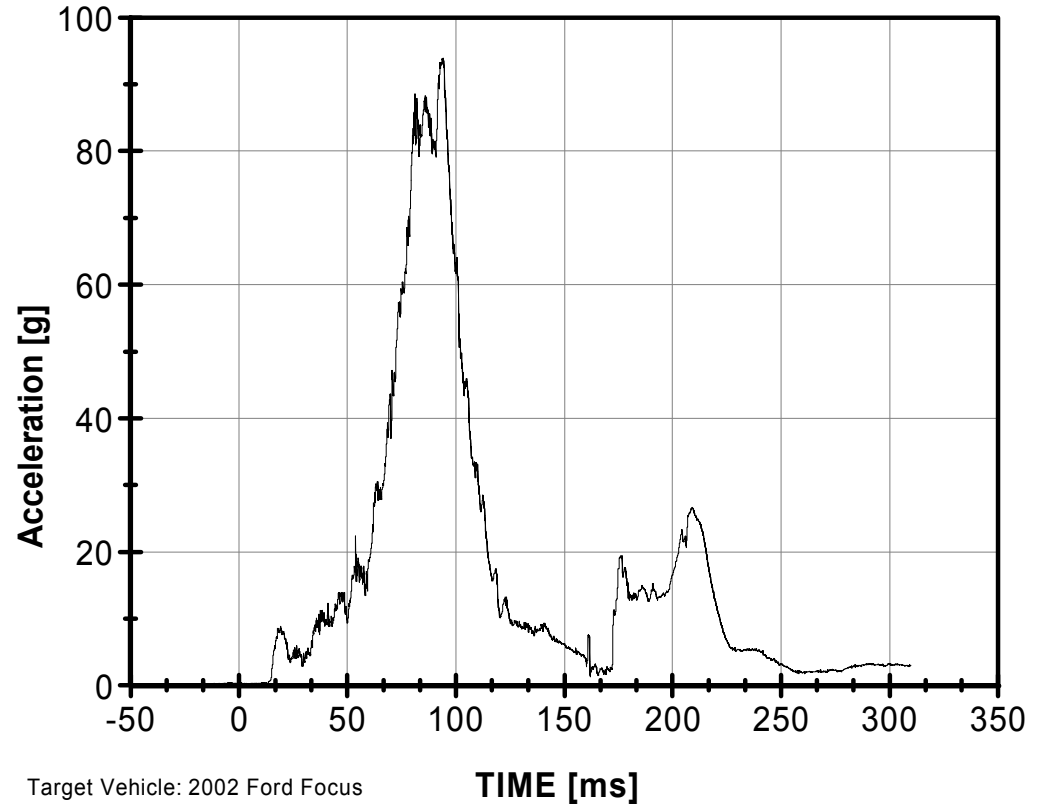
21HEADCG00H3ACYA



21HEADCG00H3ACZA



Head Resultant (21HEADCG00H3ACRA)



Target Vehicle: 2002 Ford Focus
Dummy: HIII 50th Male
Position: Front left

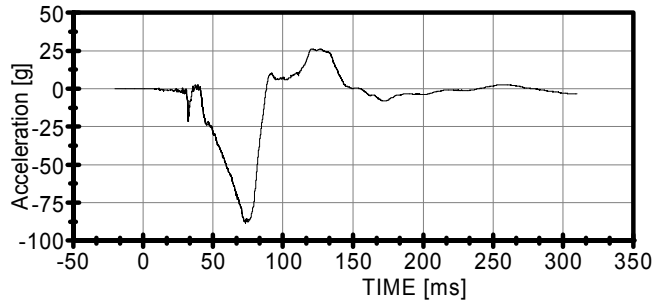
		T1(Begin)	T2(End)	
HIC[Max]=	1500.11	70.40	105.84	70.99
HIC[36]=	1500.11	70.40	105.84	70.99
HIC[15]=	1023.04	80.56	95.60	86.15

Head Injury Criterion (HIC)

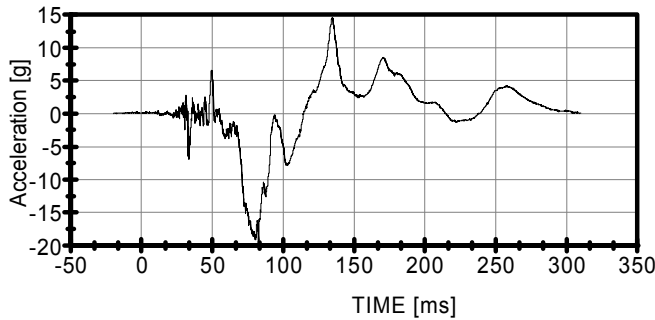
Date: 03/08/2006
Time: 14:59:27

Test Number: 060302 2006 Ford F250 into 2002 Ford Focus Full Frontal Collinear

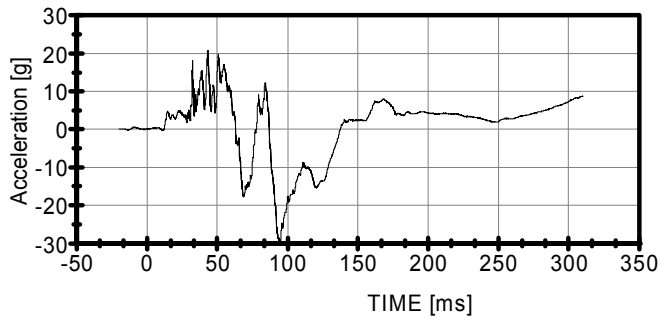
23HEADCG00HFACXA



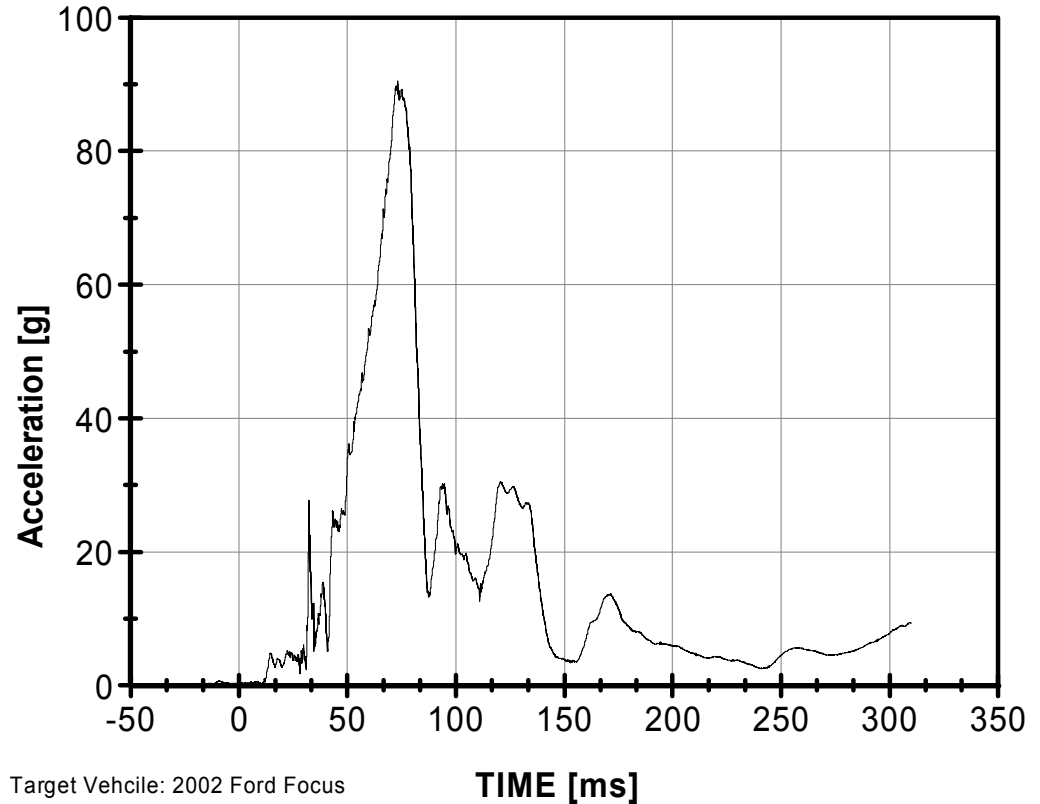
23HEADCG00HFACYA



23HEADCG00HFACZA



Head Resultant (23HEADCG00HFACRA)



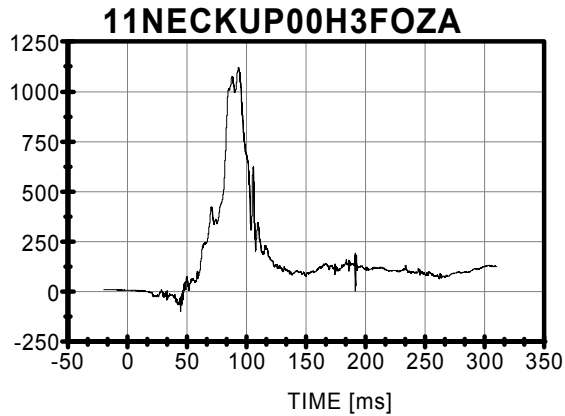
Target Vehicle: 2002 Ford Focus
Dummy: HIII 5th Female
Position: Front right

		T1(Begin)	T2(End)	
HIC[Max]=	1068.27	53.44	83.20	66.48
HIC[36]=	1068.27	53.44	83.20	66.48
HIC[15]=	887.21	65.44	80.48	81.31

Neck Injury Predictor (NIJ)

Date: 03/08/2006
Time: 14:59:27

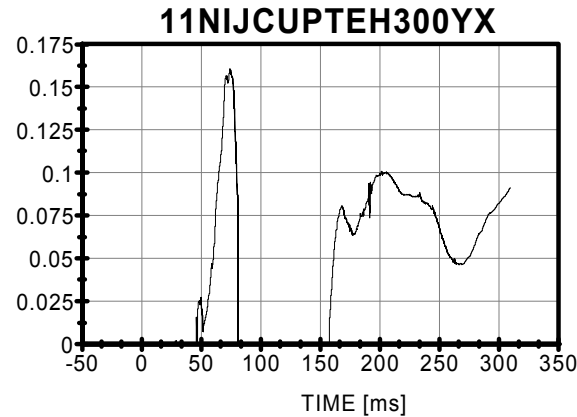
Test Number: 060302 2006 Ford F250 into 2002 Ford Focus Full Frontal Collinear



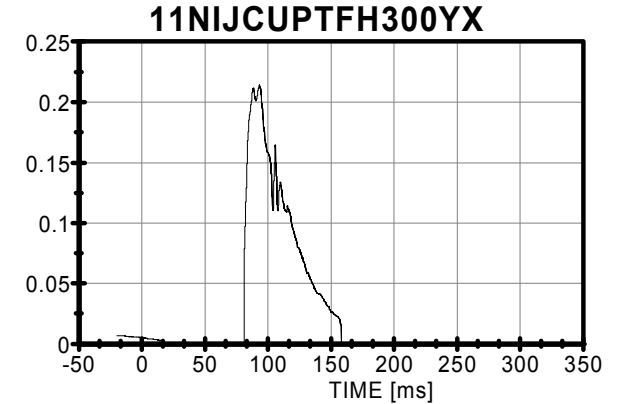
Neck Loads

Tension = 1120.23 N at 93.20 ms

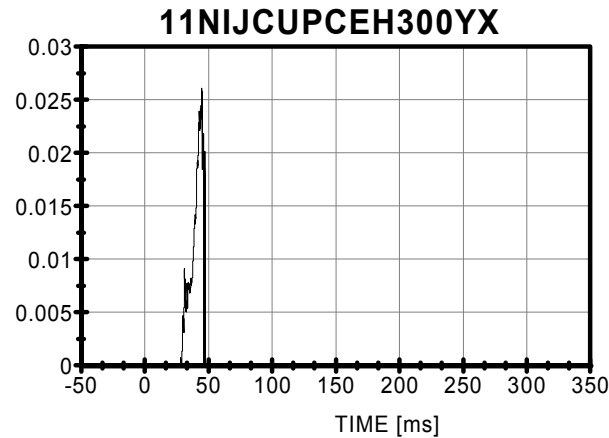
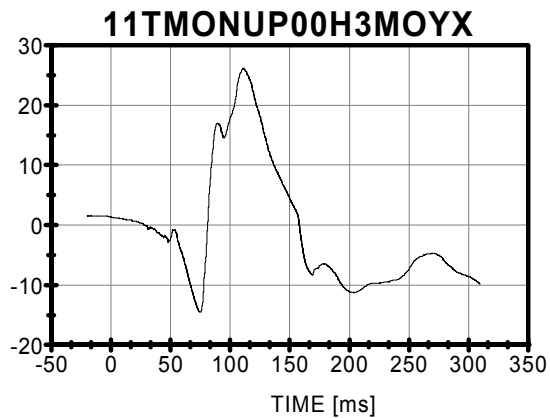
Compression = -98.79 N at 44.80 ms



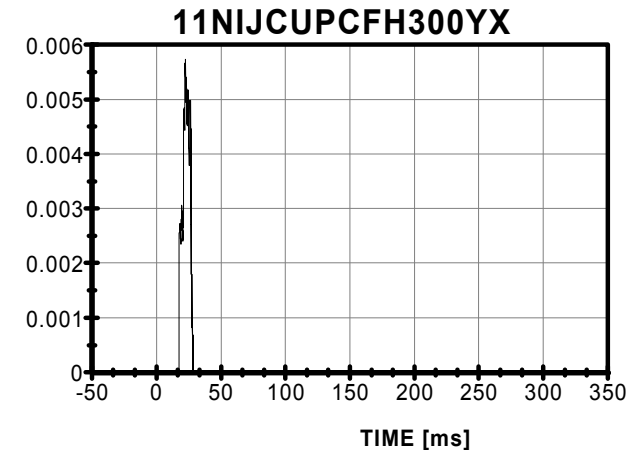
Max[NTE] = 0.16 at 74.40 mSec.



Max[NTF] = 0.21 at 93.28 mSec.



Max[NCE] = 0.03 at 44.88 mSec.



Max[NCF] = 0.01 at 22.32 mSec.

Bullet Vehicle: 2006 Ford F250 with SEAS
Dummy: HIII 50th Male
Position: Front left

Fzc(Tension) = 6806

Fzc(Compression) = 6160

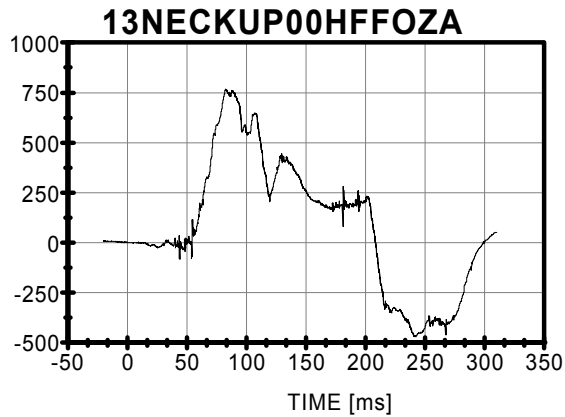
Myc(Flexion) = 310

Myc(Extension) = 135

Neck Injury Predictor (NIJ)

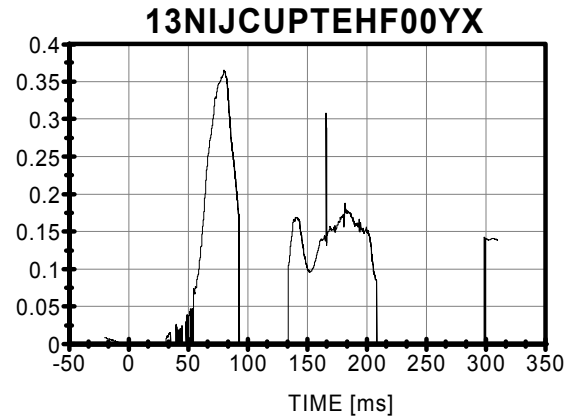
Date: 03/08/2006
Time: 14:59:27

Test Number: 060302 2006 Ford F250 into 2002 Ford Focus Full Frontal Collinear

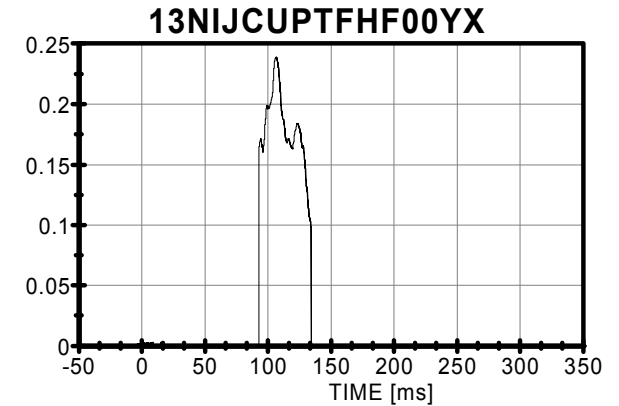


Neck Loads

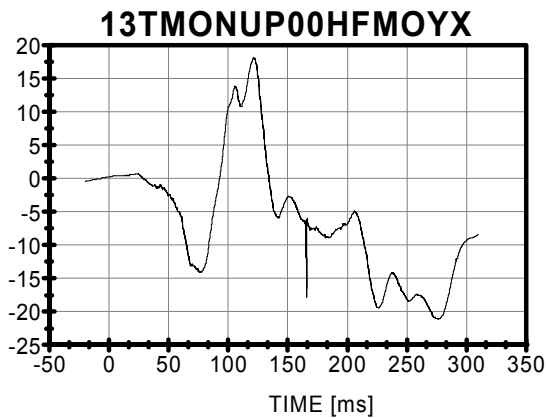
Tension = 767.35 N at 82.48 ms
Compression = -470.90 N at 242.32 ms



Max[NTE] = 0.37 at 80.32 mSec.

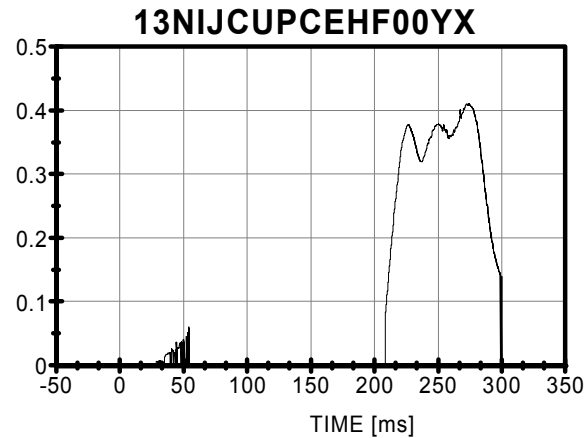


Max[NTF] = 0.24 at 106.56 mSec.

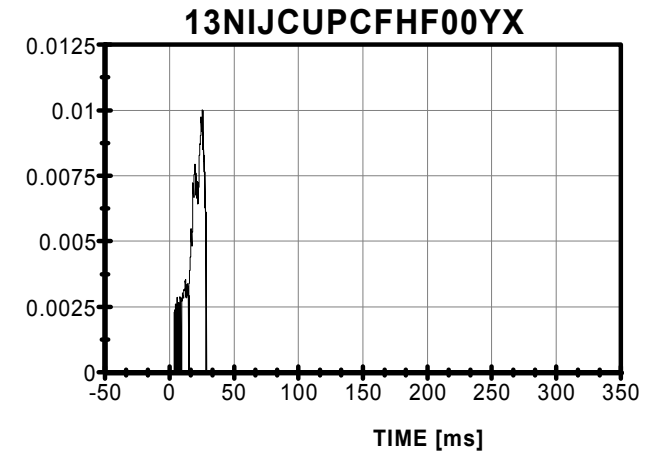


Bullet Vehicle: 2006 Ford F250 with SEAS
Dummy: HIII 5th Female
Position: Front right

Fzc(Tension) = 4287
Fzc(Compression) = 3880
Myc(Flexion) = 155
Myc(Extension) = 67



Max[NCE] = 0.41 at 274.08 mSec.



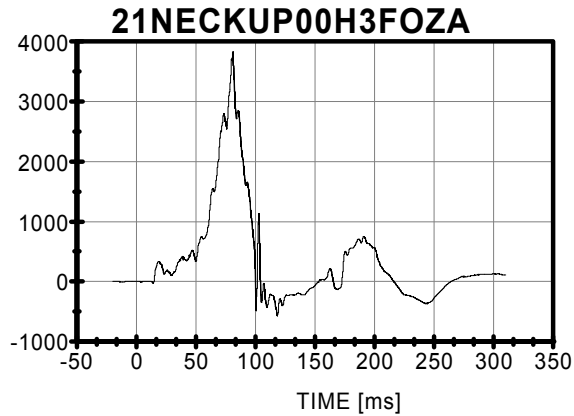
Max[NCF] = 0.01 at 25.52 mSec.



Neck Injury Predictor (NIJ)

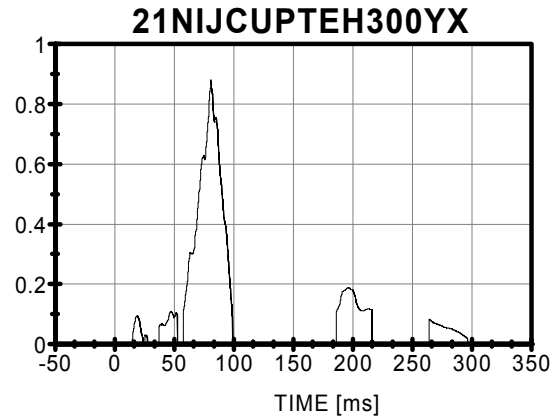
Date: 03/08/2006
Time: 14:59:27

Test Number: 060302 2006 Ford F250 into 2002 Ford Focus Full Frontal Collinear

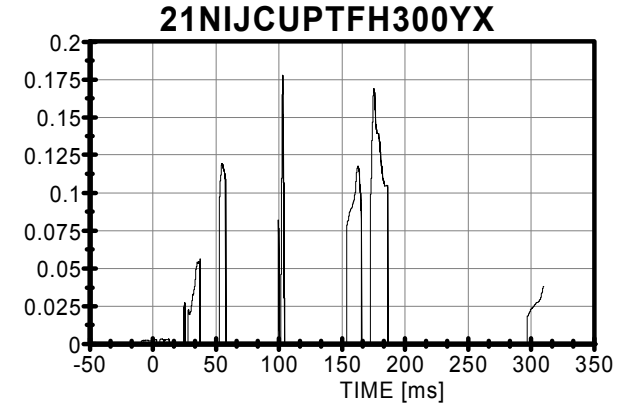


Neck Loads

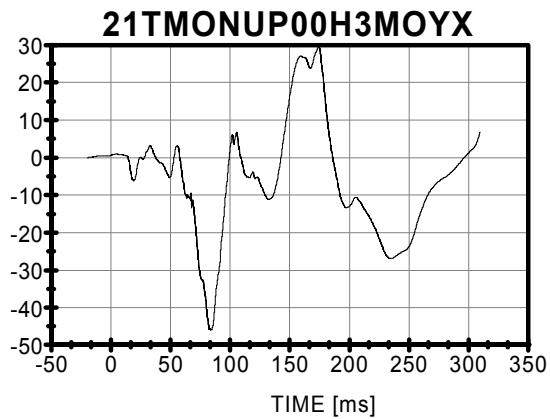
Tension = 3840.46 N at 81.04 ms
Compression = -568.02 N at 118.48 ms



Max[NTE] = 0.88 at 81.12 mSec.

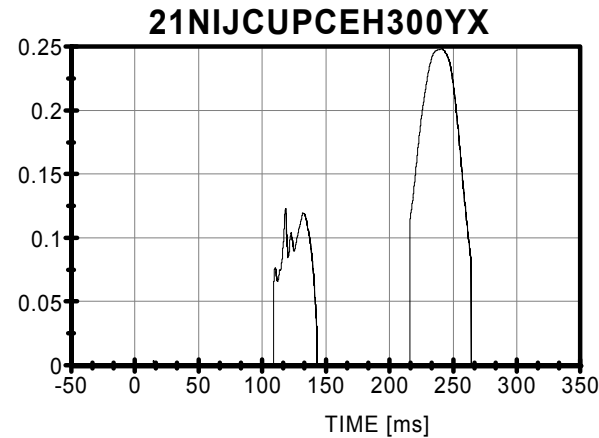


Max[NTF] = 0.18 at 103.04 mSec.

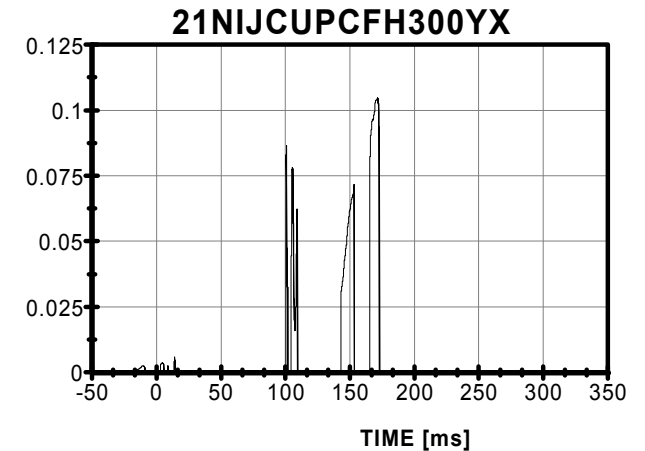


Target Vehicle: 2002 Ford Focus
Dummy: HIII 50th Male
Position: Front left

Fzc(Tension) = 6806
Fzc(Compression) = 6160
Myc(Flexion) = 310
Myc(Extension) = 135



Max[NCE] = 0.25 at 241.36 mSec.

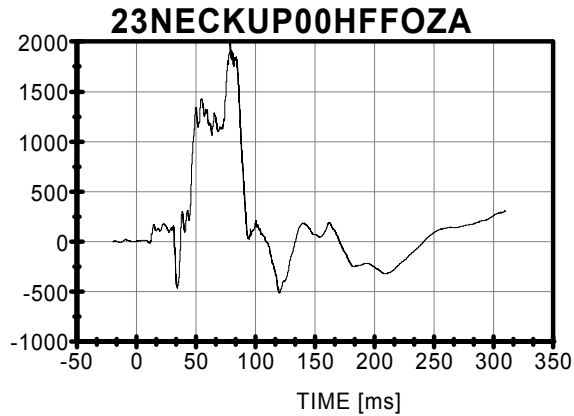


Max[NCF] = 0.10 at 171.52 mSec.

Neck Injury Predictor (NIJ)

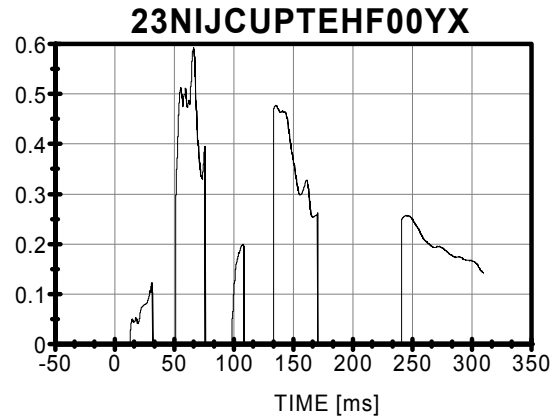
Date: 03/08/2006
Time: 14:59:28

Test Number: 060302 2006 Ford F250 into 2002 Ford Focus Full Frontal Collinear

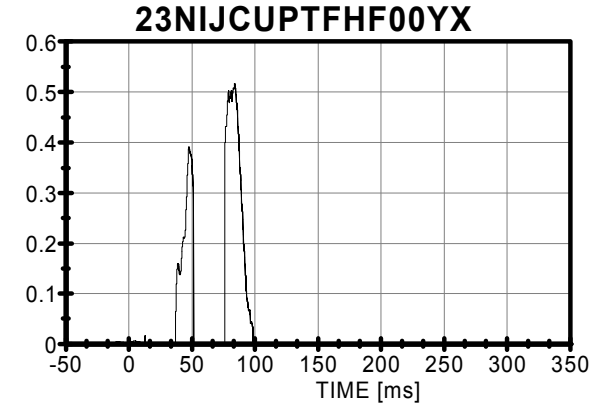


Neck Loads

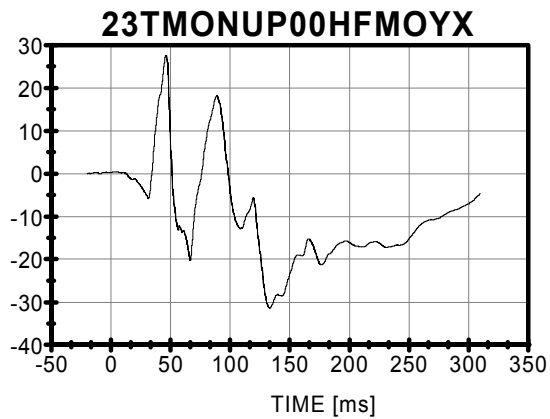
Tension = 1990.38 N at 79.12 ms
Compression = -510.54 N at 120.48 ms



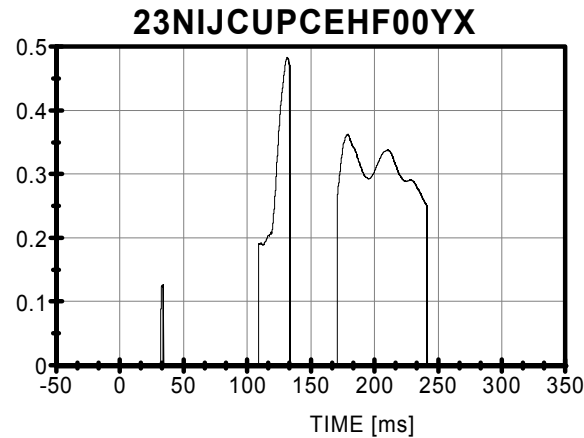
Max[NTE] = 0.59 at 66.56 mSec.



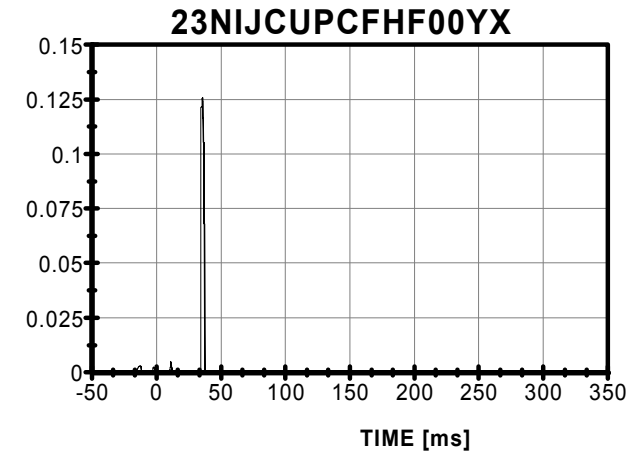
Max[NTF] = 0.52 at 84.08 mSec.



Target Vehicle: 2002 Ford Focus
Dummy: HIII 5th Female
Position: Front right
Fzc(Tension) = 4287
Fzc(Compression) = 3880
Myc(Flexion) = 155
Myc(Extension) = 67



Max[NCE] = 0.48 at 131.68 mSec.



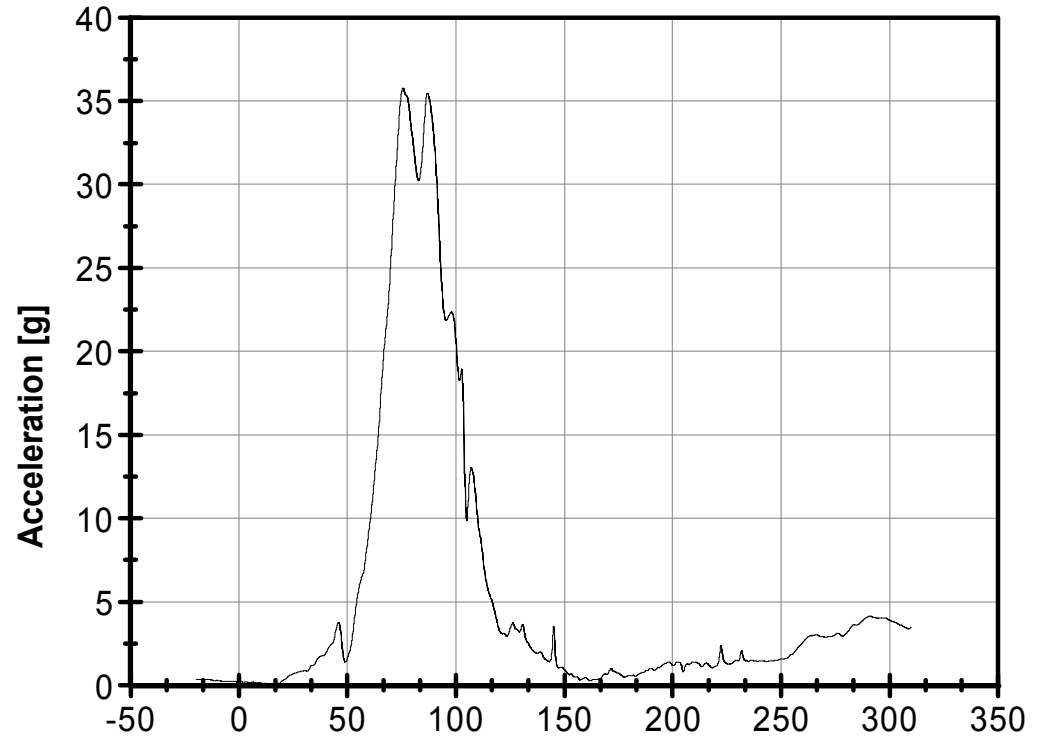
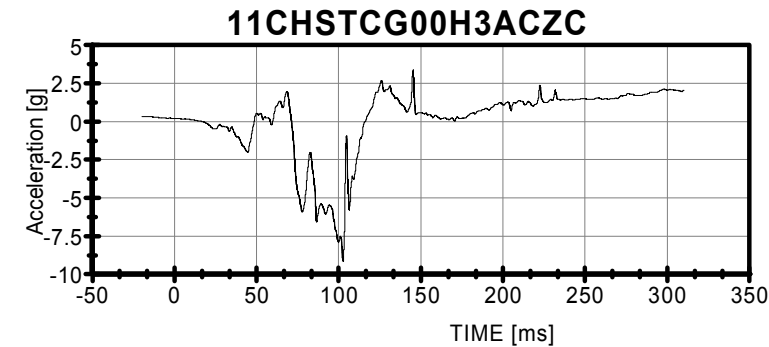
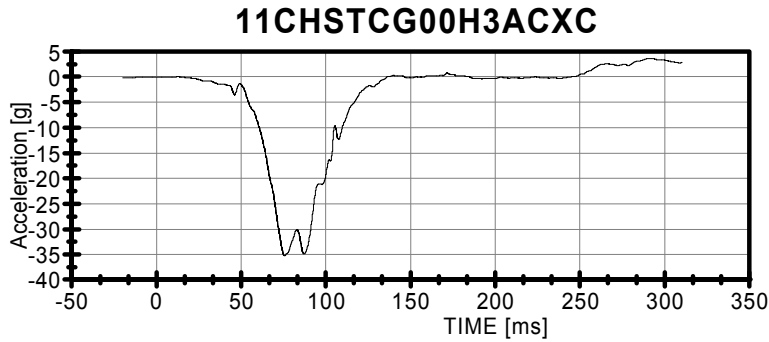
Max[NCF] = 0.13 at 35.68 mSec.

3 ms Duration Acceleration (CLIP)

Date: 03/08/2006
Time: 14:59:28

Test Number: 060302 2006 Ford F250 into 2002 Ford Focus Full Frontal Collinear

Chest Resultant (11CHSTCG00H3ACRC)



Bullet Vehicle: 2006 Ford F250 with SEAS
Dummy: HIII 50th Male
Position: Front left

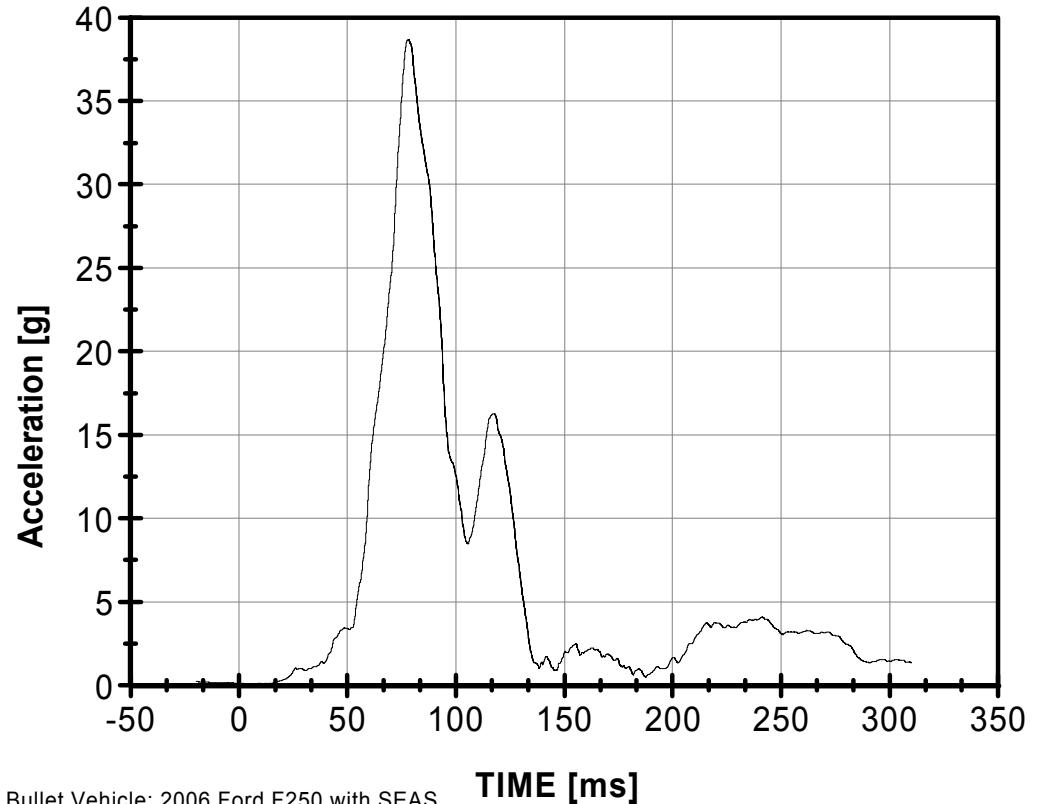
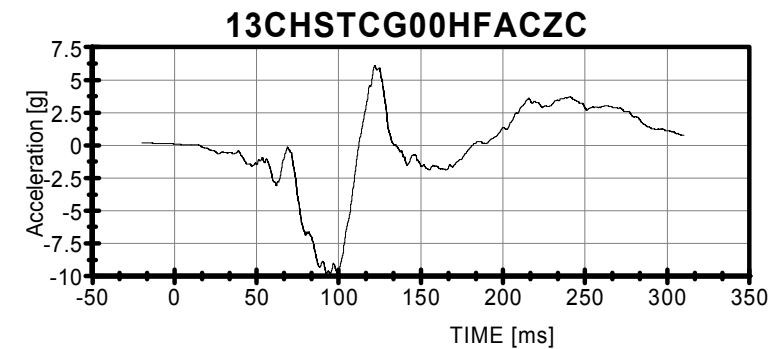
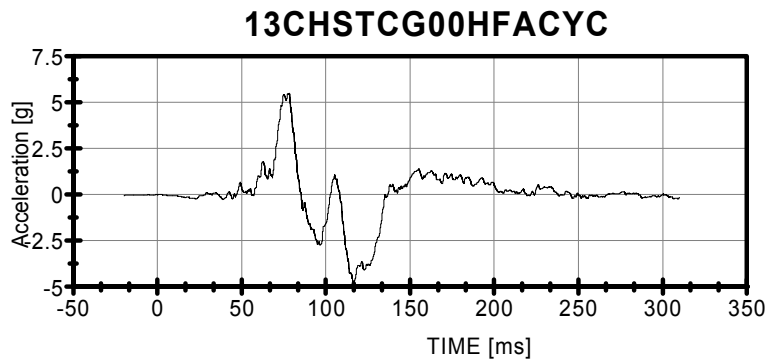
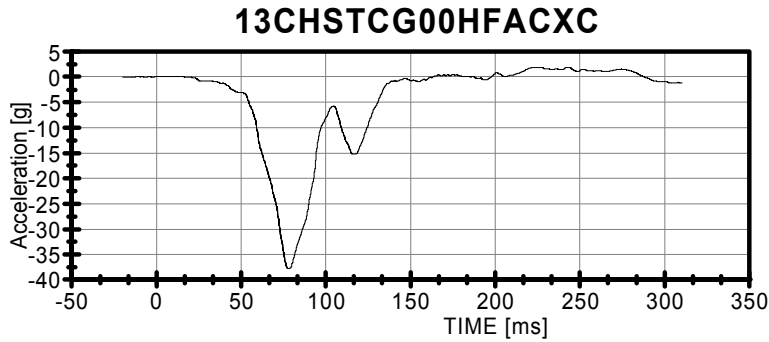
CLIP [3 ms] = 35.25g
T1 (Begin): 74.69ms
T2 (End): 77.69ms

3 ms Duration Acceleration (CLIP)

Date: 03/08/2006
Time: 14:59:28

Test Number: 060302 2006 Ford F250 into 2002 Ford Focus Full Frontal Collinear

Chest Resultant (13CHSTCG00HFACRC)



Bullet Vehicle: 2006 Ford F250 with SEAS
Dummy: HIII 5th Female
Position: Front right

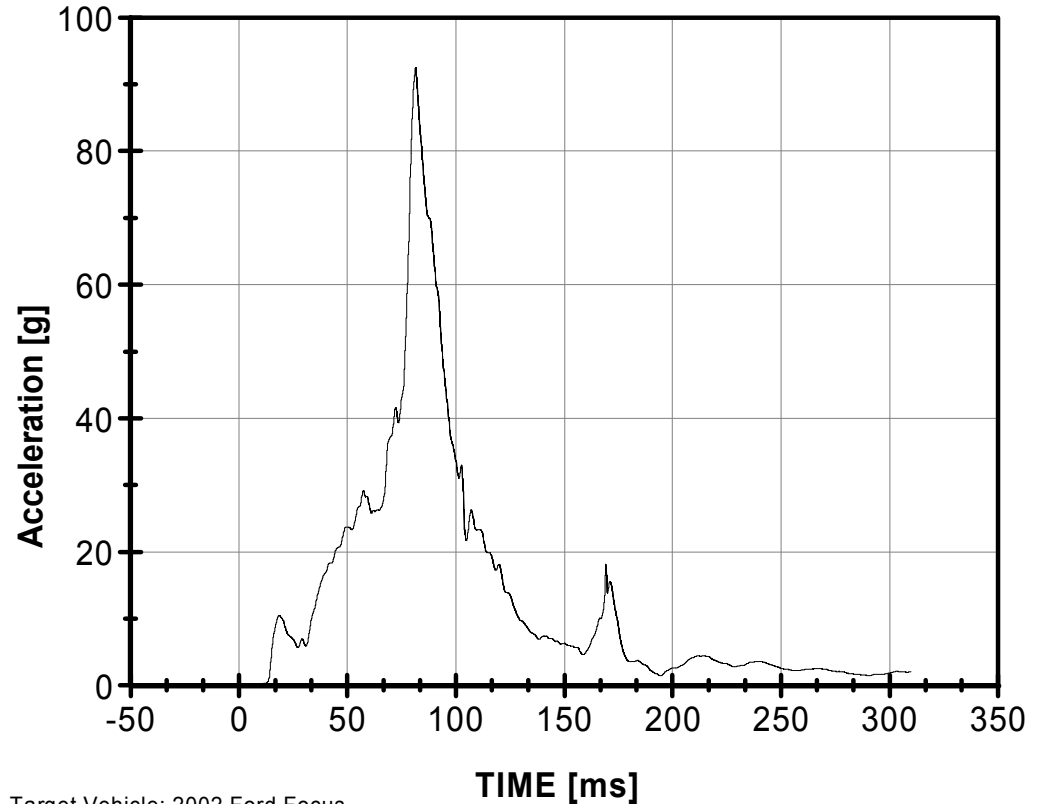
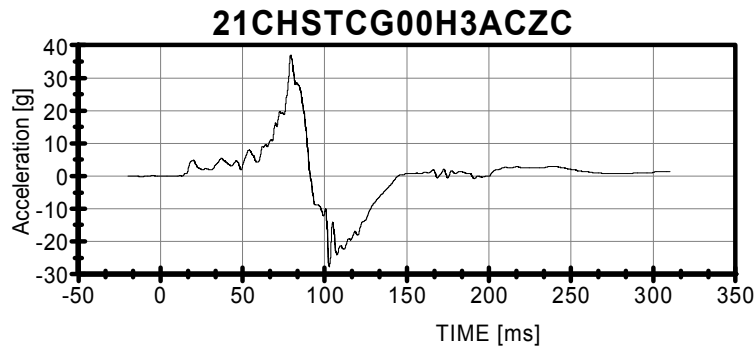
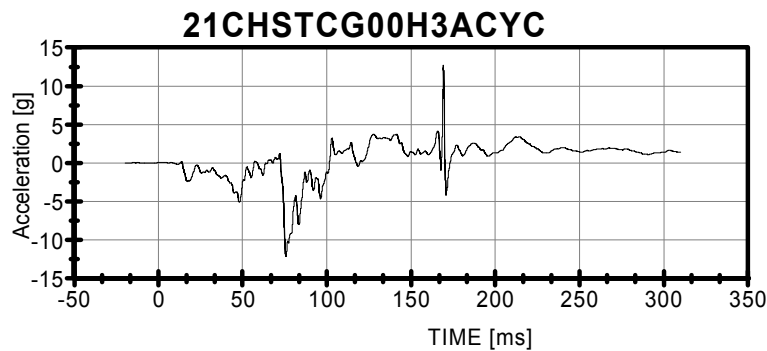
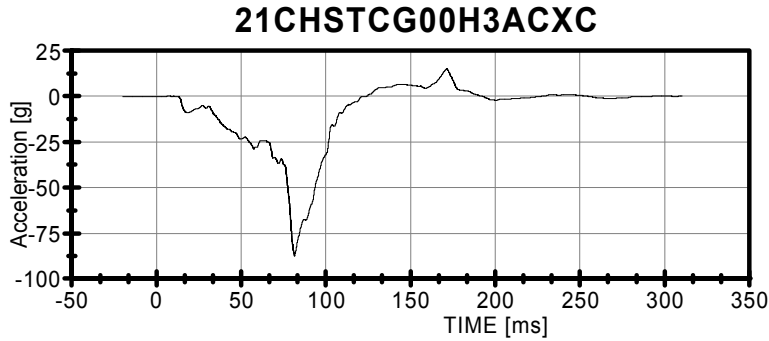
CLIP [3 ms] = 38.13g
T1 (Begin): 76.78ms
T2 (End): 79.78ms

3 ms Duration Acceleration (CLIP)

Date: 03/08/2006
Time: 14:59:28

Test Number: 060302 2006 Ford F250 into 2002 Ford Focus Full Frontal Collinear

Chest Resultant (21CHSTCG00H3ACRC)



Target Vehicle: 2002 Ford Focus
Dummy: HIII 50th Male
Position: Front left

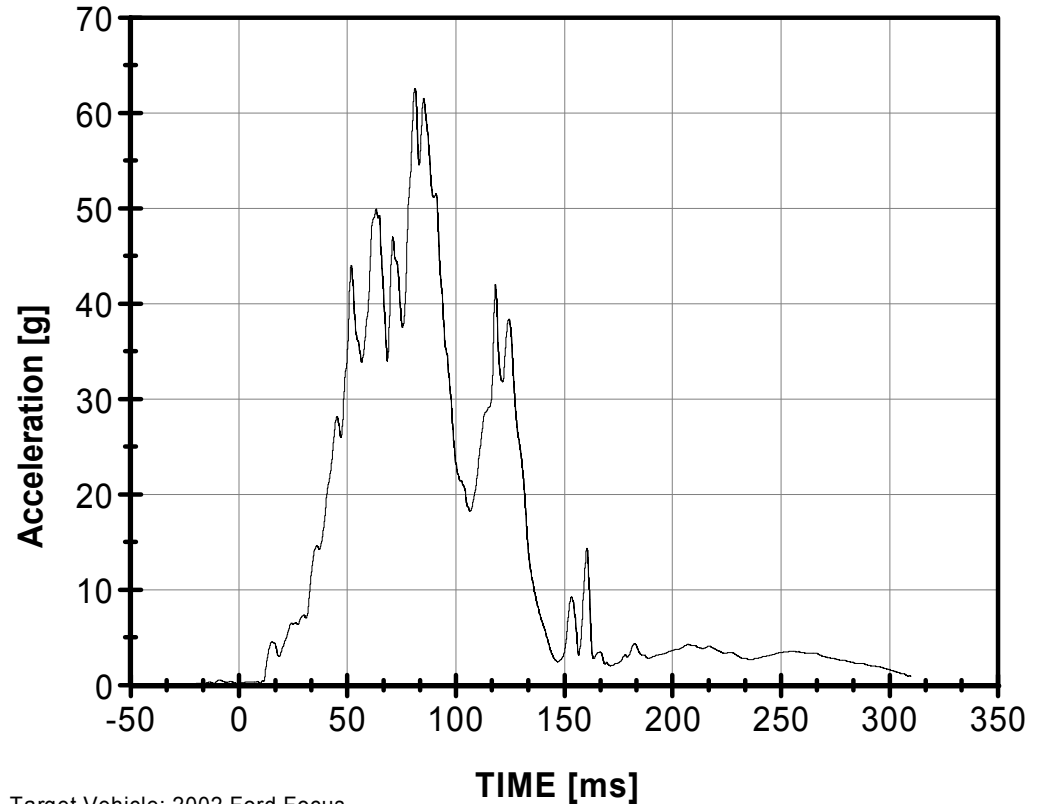
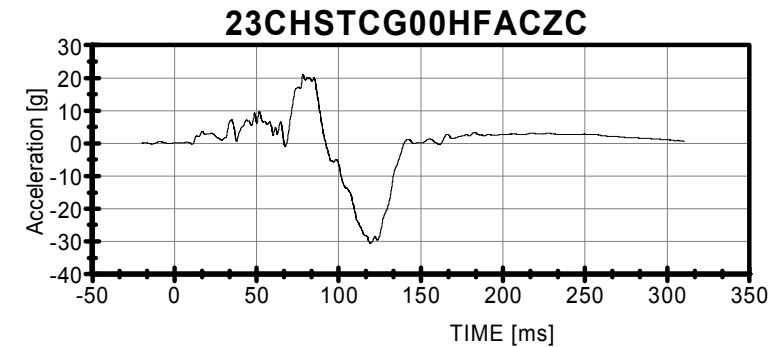
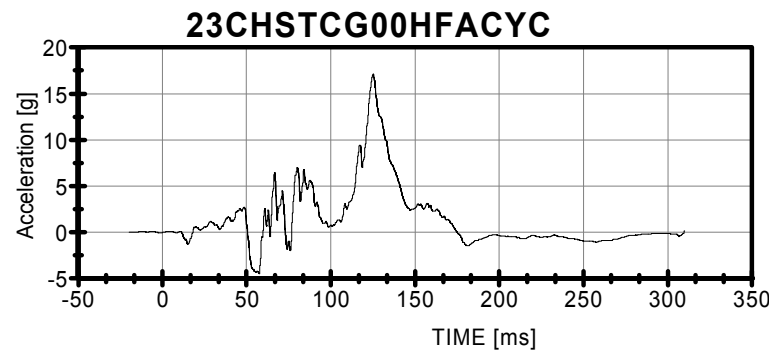
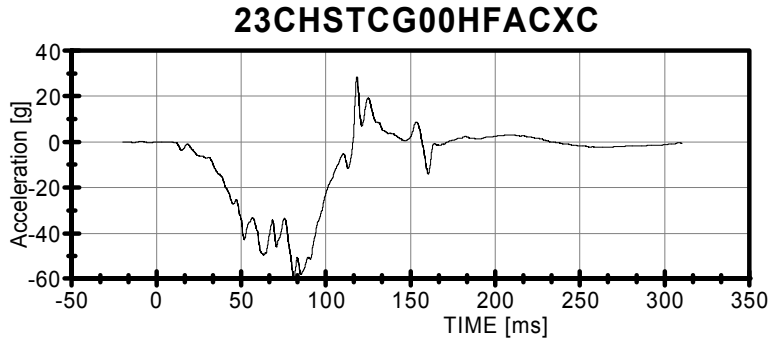
CLIP [3 ms] = 85.75g
T1 (Begin): 80.01ms
T2 (End): 83.01ms

3 ms Duration Acceleration (CLIP)

Date: 03/08/2006
Time: 14:59:29

Test Number: 060302 2006 Ford F250 into 2002 Ford Focus Full Frontal Collinear

Chest Resultant (23CHSTCG00HFACRC)

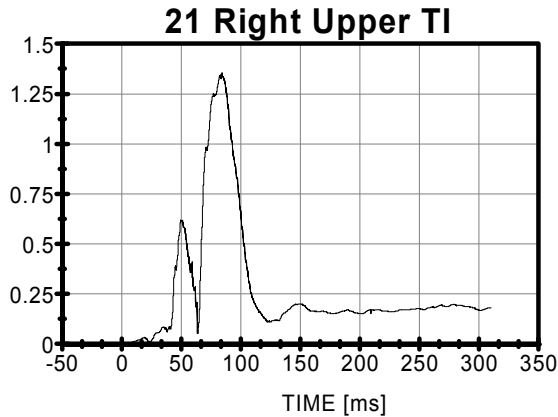


Target Vehicle: 2002 Ford Focus
Dummy: HIII 5th Female
Position: Front right

CLIP [3 ms] = 57.77g
T1 (Begin): 84.09ms
T2 (End): 87.09ms

Tibia Index (TI)

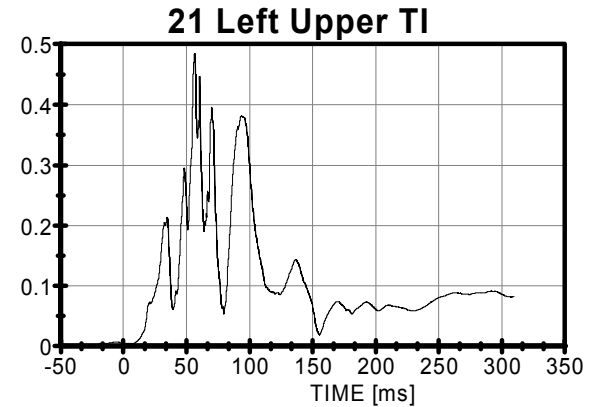
Test Number: 060302 2006 Ford F250 into 2002 Ford Focus Full Frontal Collinear



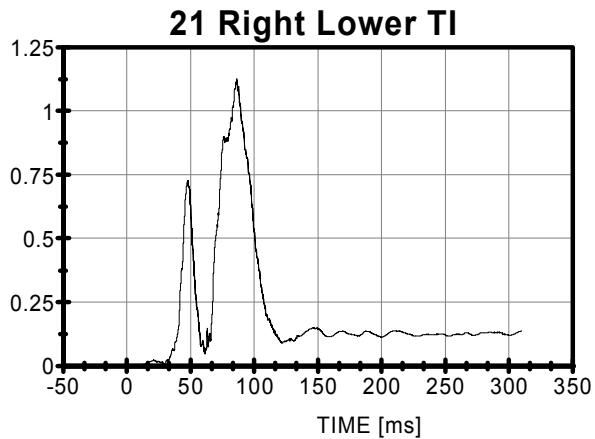
Max = 1.36 at 84.32 ms

Target Vehicle: 2002 Ford Focus
Dummy: HIII 50th Male
Position: Front left

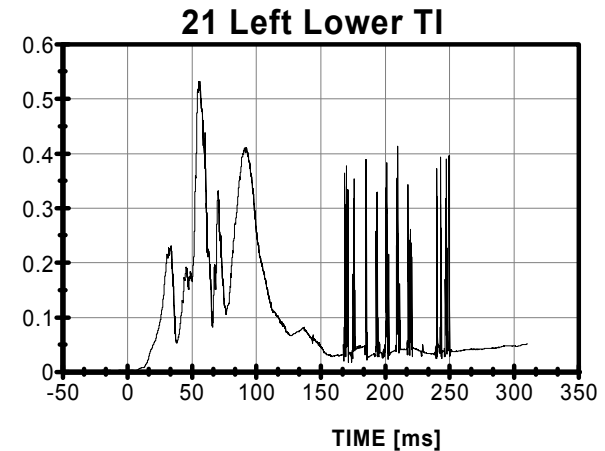
Critical Bending Moment = 240 N-m
Critical Compression Force = 12000 N



Max = 0.48 at 56.48 ms



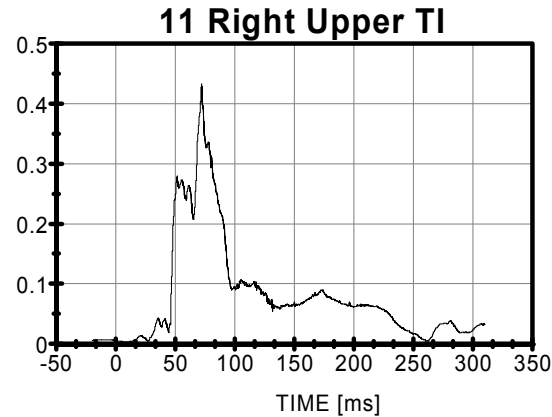
Max = 1.13 at 86.32 ms



Max = 0.53 at 55.36 ms

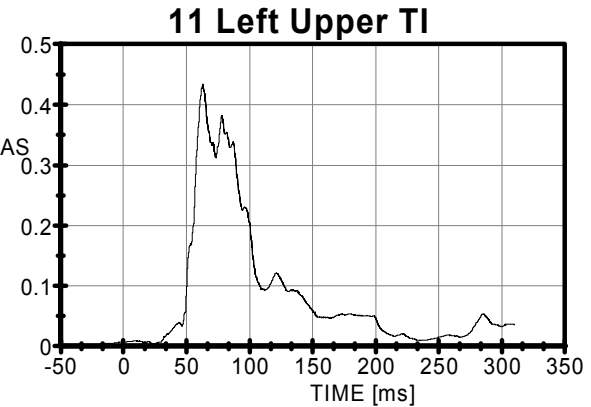
Tibia Index (TI)

Test Number: 060302 2006 Ford F250 into 2002 Ford Focus Full Frontal Collinear

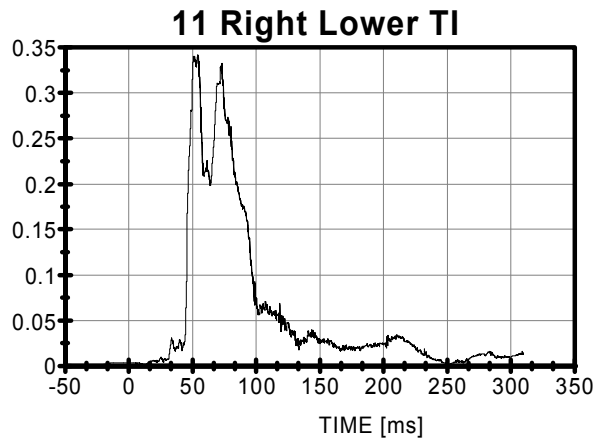


Max = 0.43 at 72.32 ms

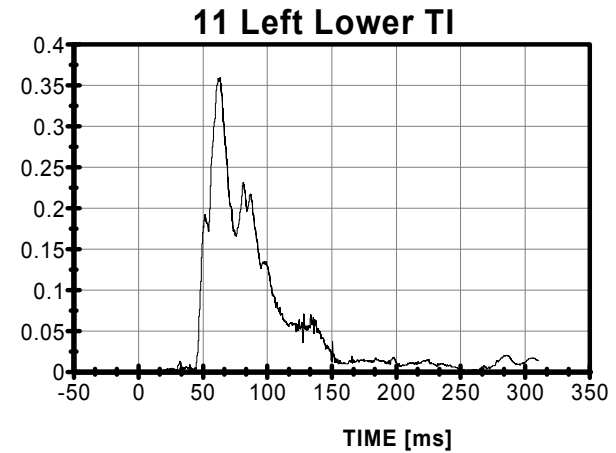
Bullet Vehicle: 2006 Ford F250 with SEAS
Dummy: HIII 50th Male
Position: Front left
Critical Bending Moment = 240 N-m
Critical Compression Force = 12000 N



Max = 0.43 at 62.64 ms



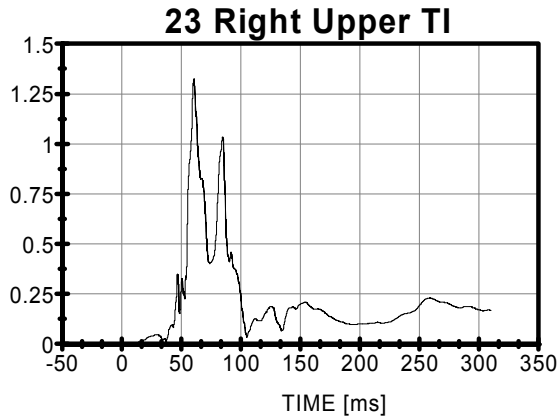
Max = 0.34 at 54.24 ms



Max = 0.36 at 63.28 ms

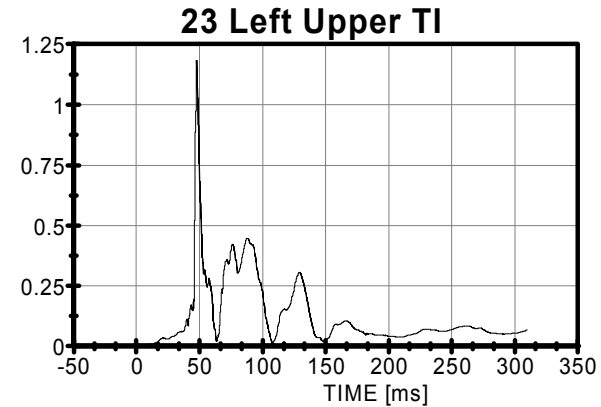
Tibia Index (TI)

Test Number: 060302 2006 Ford F250 into 2002 Ford Focus Full Frontal Collinear

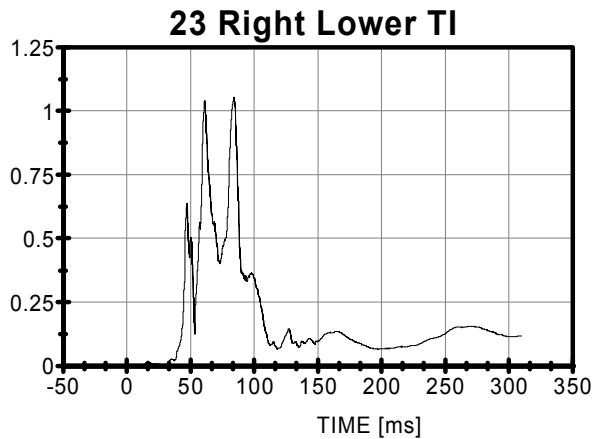


Max = 1.33 at 60.80 ms

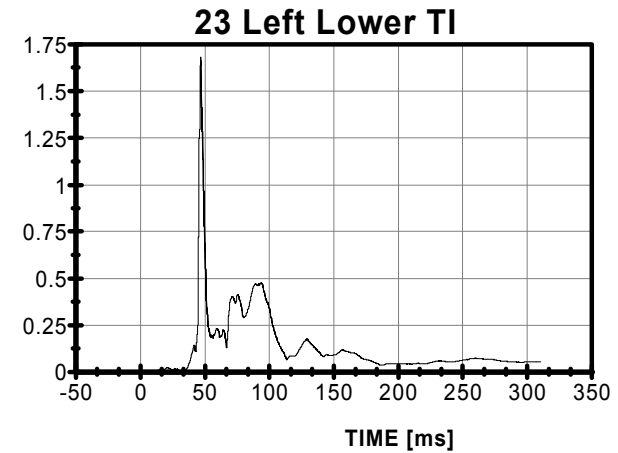
Target Vehicle: 2002 Ford Focus
Dummy: HIII 5th Female
Position: Front right
Critical Bending Moment = 146 N-m
Critical Compression Force = 8600 N



Max = 1.18 at 47.52 ms



Max = 1.05 at 83.920 ms



Max = 1.68 at 46.720 ms

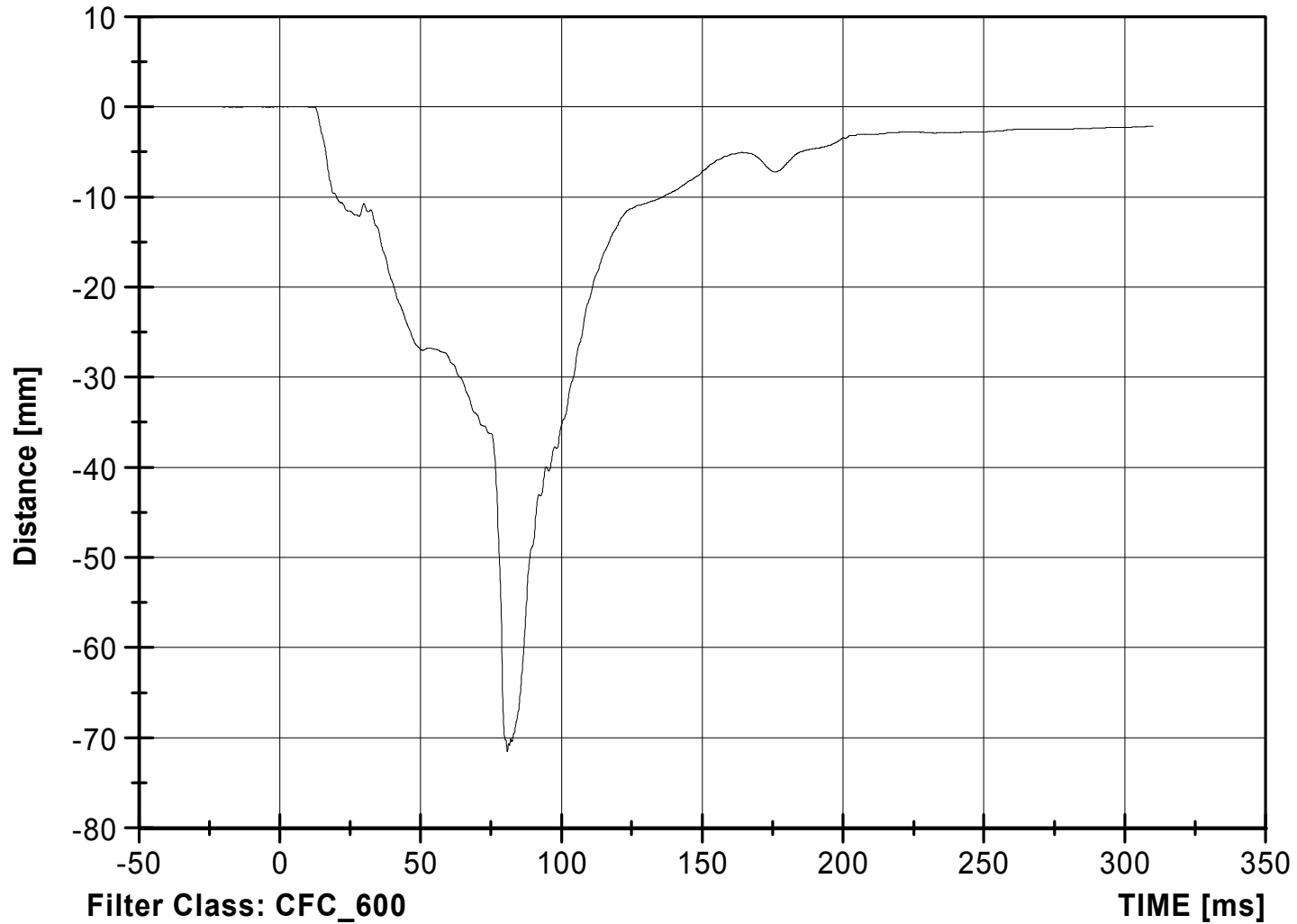
Chest Deflection

Date: 03/08/2006
Time: 14:59:29

Test Number: 060302 2006 Ford F250 into 2002 Ford Focus Full Frontal Collinear

Target Vehicle: 2002 Ford Focus
Dummy: HIII 50th Male
Position: Front left

Chest Deflection(21CHST0000H3DSXB)



Max = 0.01 mm at -9.28 ms
Min = -71.51 mm at 80.80 ms

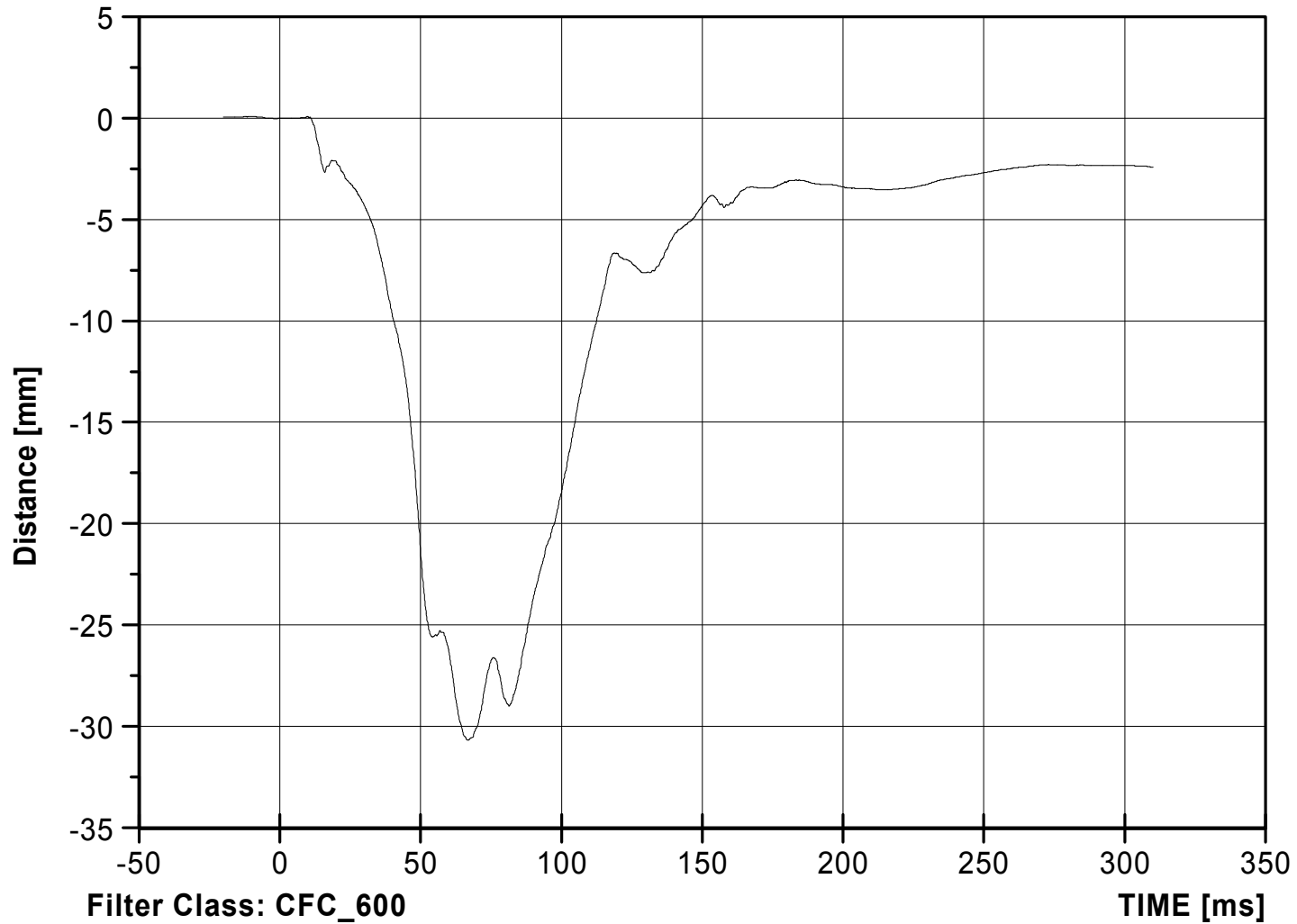
Chest Deflection

Date: 03/08/2006
Time: 14:59:29

Test Number: 060302 2006 Ford F250 into 2002 Ford Focus Full Frontal Collinear

Target Vehicle: 2002 Ford Focus
Dummy: HIII 5th Female
Position: Front right

Chest Deflection(23CHST0000HFDSXB)



Max = 0.08 mm at 9.76 ms
Min = -30.67 mm at 66.56 ms

Chest Deflection

Date: 03/08/2006

Time: 14:59:30

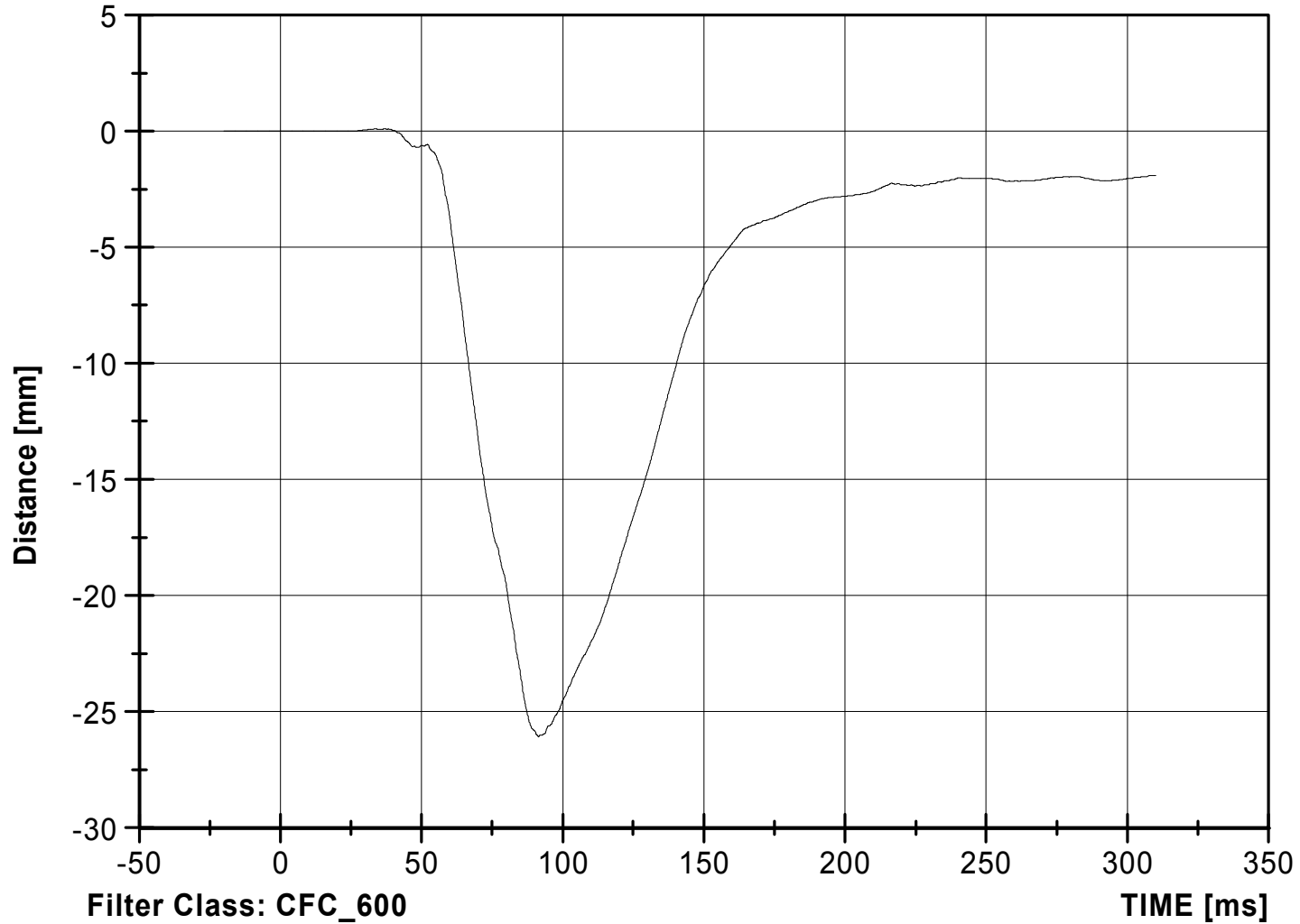
Test Number: 060302 2006 Ford F250 into 2002 Ford Focus Full Frontal Collinear

Bullet Vehicle: 2006 Ford F250 with SEAS

Dummy: HIII 50th Male

Position: Front left

Chest Deflection(11CHST0000H3DSXB)



Max = 0.10 mm at 36.96 ms

Min = -26.07 mm at 91.44 ms

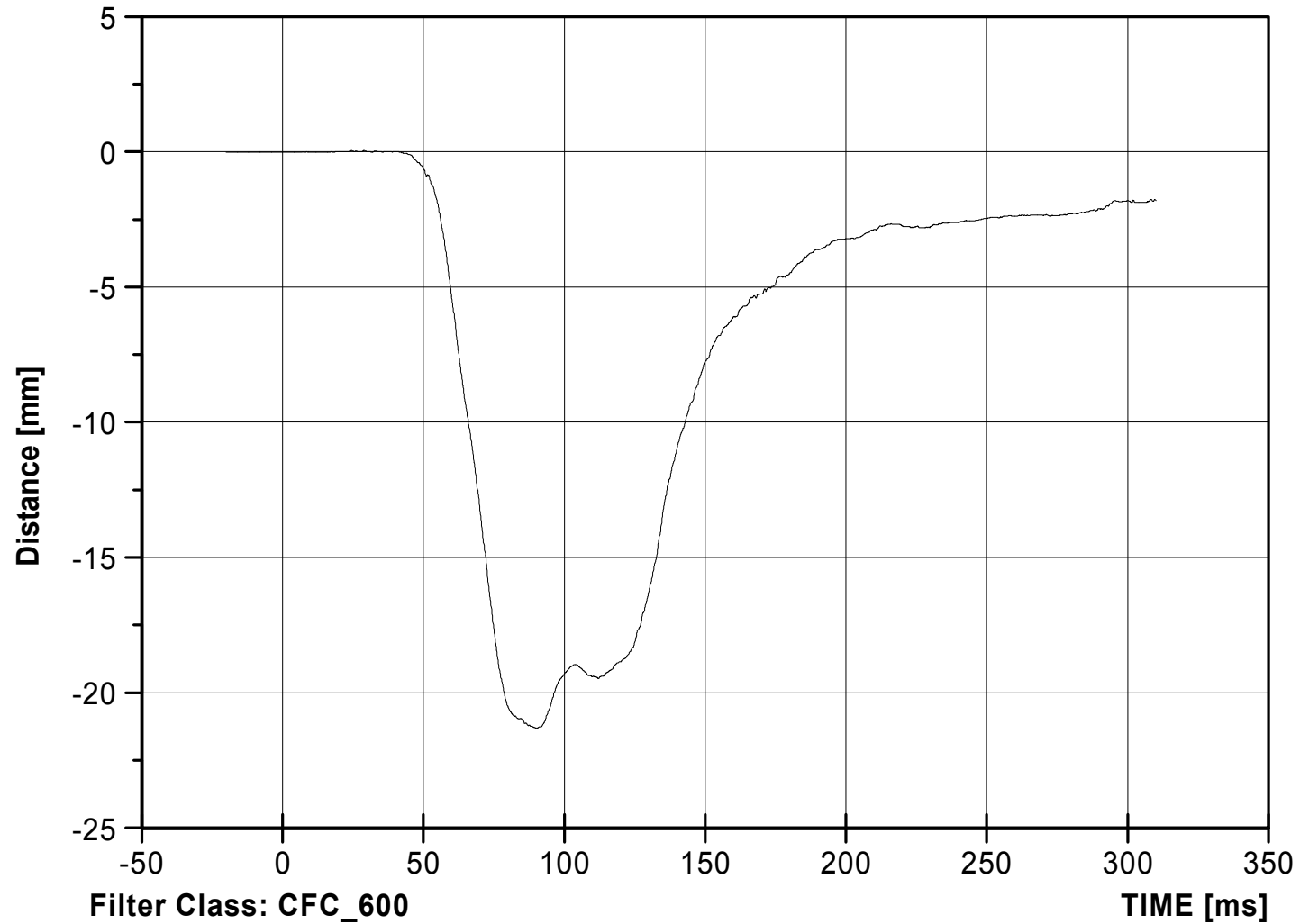
Chest Deflection

Date: 03/08/2006
Time: 14:59:30

Test Number: 060302 2006 Ford F250 into 2002 Ford Focus Full Frontal Collinear

Bullet Vehicle: 2006 Ford F250 with SEAS
Dummy: HIII 5th Female
Position: Front right

Chest Deflection(13CHST0000HFDSXB)

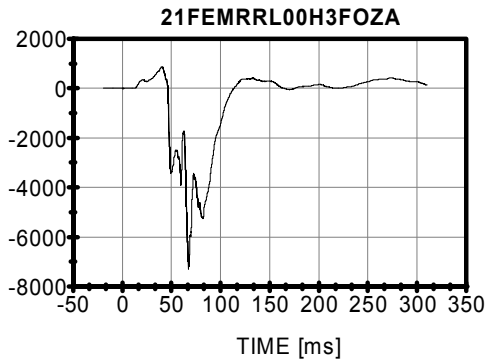


Max = 0.05 mm at 28.88 ms
Min = -21.31 mm at 90.48 ms

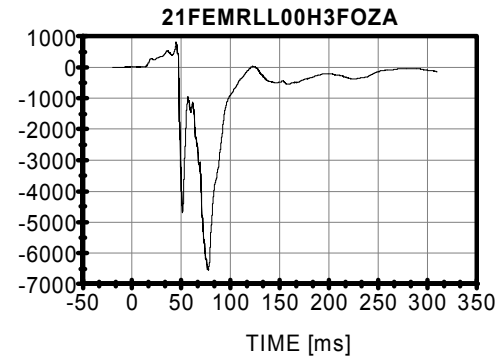
Femur Load

Test Number: 060302 2006 Ford F250 into 2002 Ford Focus Full Frontal Collinear

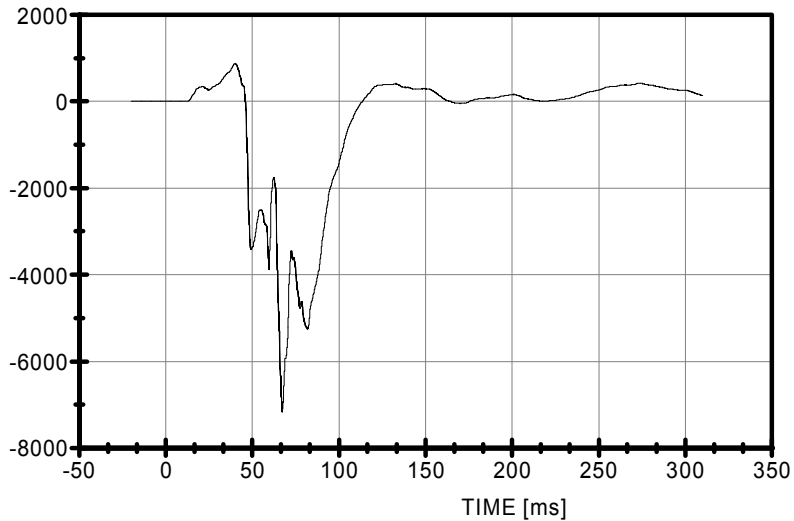
Right Femur



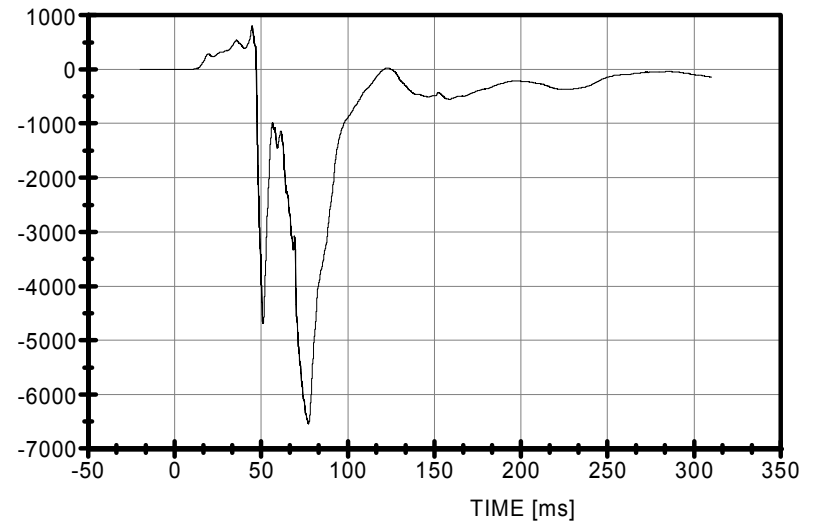
Left Femur



21FEMRRL00H3FOZB



21FEMRLL00H3FOZB



Max [Tension] 873.82 N at 40.08 ms
Min [Compression] -7175.36 N at 67.20 ms

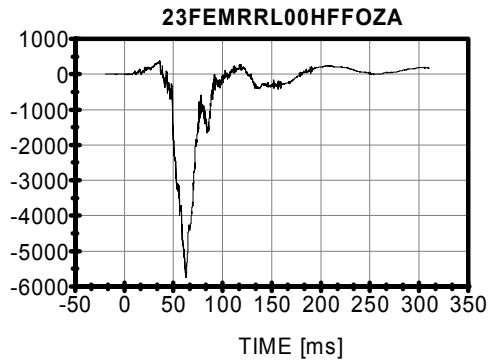
Max [Tension] 802.09 N at 44.72 ms
Min [Compression] -6538.92 N at 77.36 ms

Femur Load

Date: 03/08/2006
Time: 14:59:30

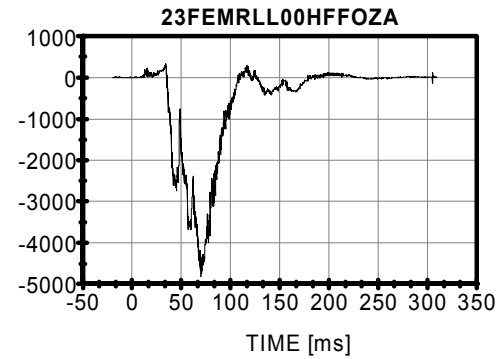
Test Number: 060302 2006 Ford F250 into 2002 Ford Focus Full Frontal Collinear

Right Femur

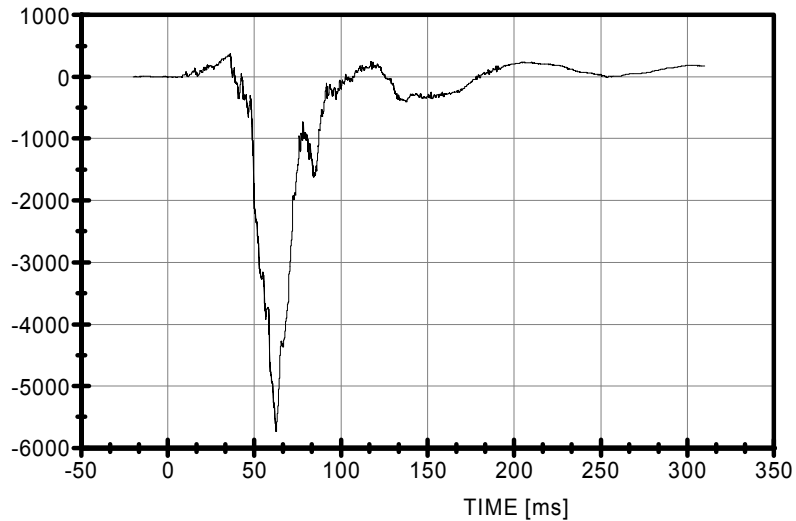


Target Vehicle: 2002 Ford Focus
Dummy: HIII 5th Female
Position: Front right

Left Femur

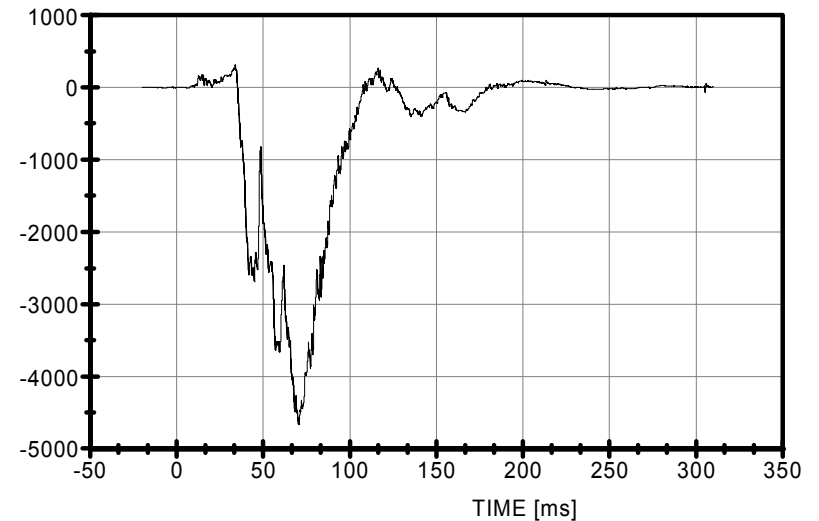


23FEMRRL00HFFOZB



Max [Tension] 367.19 N at 36.08 ms
Min [Compression] -5728.51 N at 62.64 ms

23FEMRLL00HFFOZB



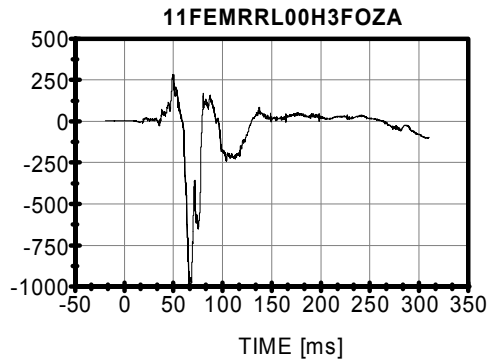
Max [Tension] 313.55 N at 33.92 ms
Min [Compression] -4670.65 N at 70.64 ms

Femur Load

Date: 03/08/2006
Time: 14:59:30

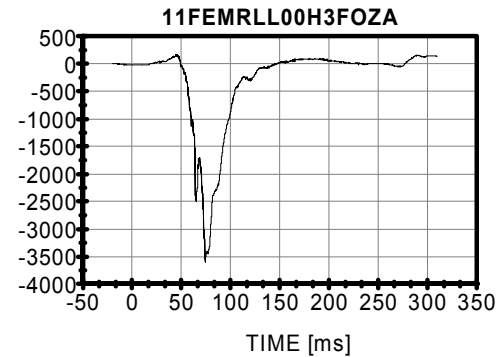
Test Number: 060302 2006 Ford F250 into 2002 Ford Focus Full Frontal Collinear

Right Femur

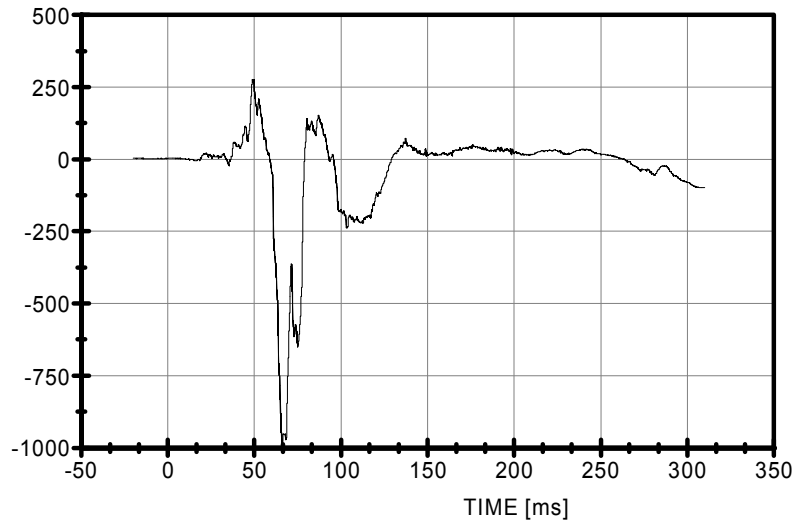


Bullet Vehicle: 2006 Ford F250 with SEAS
Dummy: HIII 50th Male
Position: Front left

Left Femur

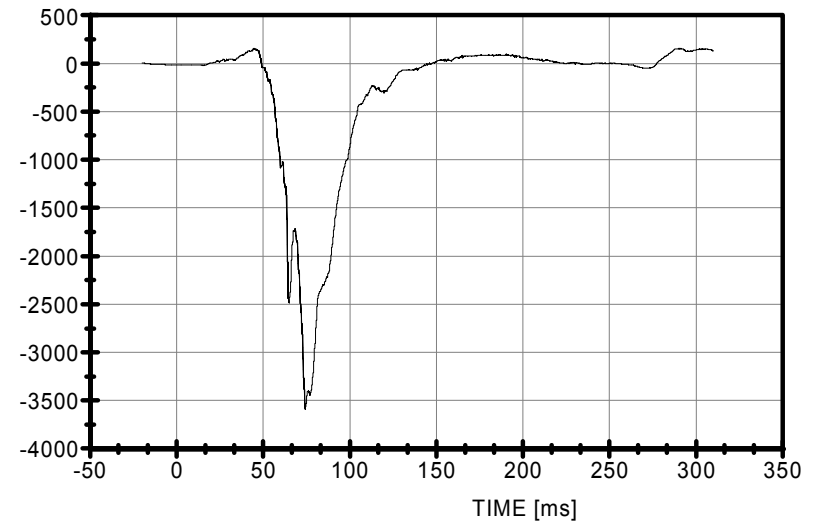


11FEMRRL00H3FOZB



Max [Tension] 277.40 N at 49.84 ms
Min [Compression] -989.56 N at 66.00 ms

11FEMRLL00H3FOZB



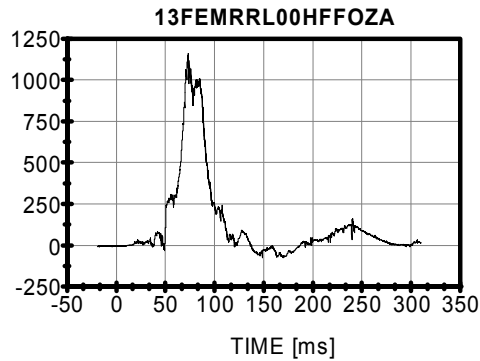
Max [Tension] 156.03 N at 291.12 ms
Min [Compression] -3593.53 N at 74.40 ms

Femur Load

Date: 03/08/2006
Time: 14:59:30

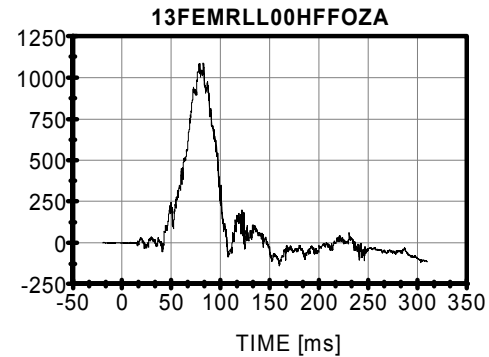
Test Number: 060302 2006 Ford F250 into 2002 Ford Focus Full Frontal Collinear

Right Femur

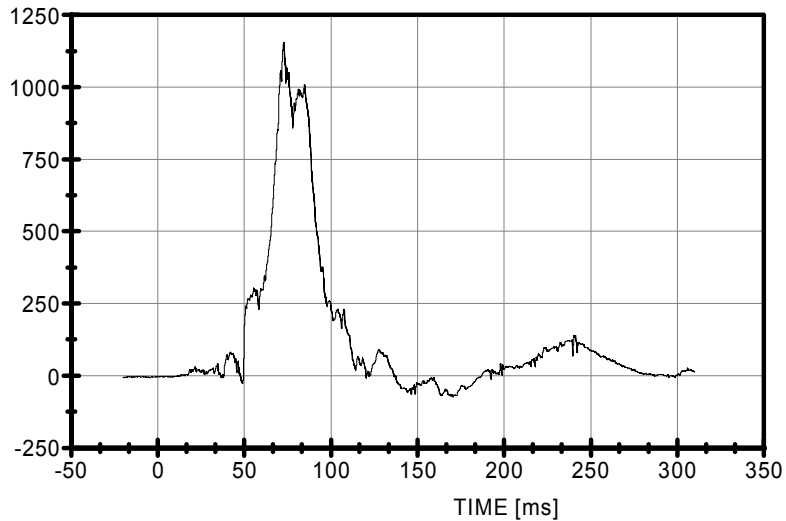


Bullet Vehicle: 2006 Ford F250 with SEAS
Dummy: HIII 5th Female
Position: Front right

Left Femur

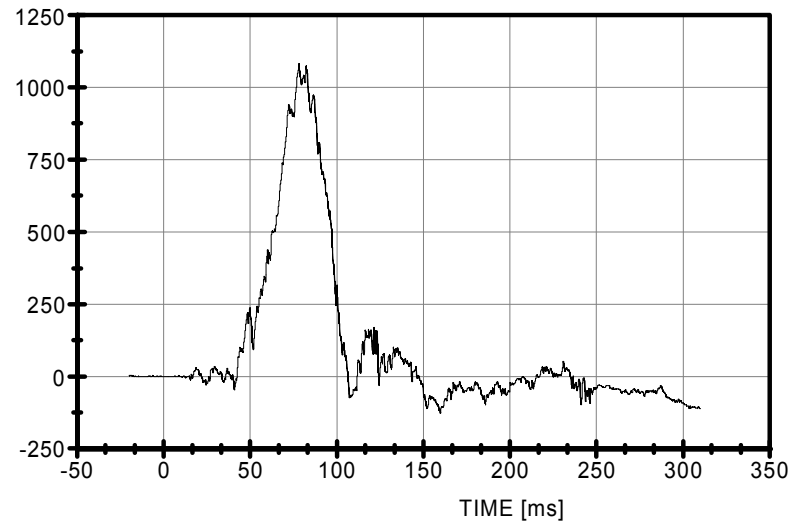


13FEMRRL00HFFOZB



Max [Tension] 1156.11 N at 72.72 ms
Min [Compression] -72.02 N at 170.56 ms

13FEMRLL00HFFOZB



Max [Tension] 1083.03 N at 78.24 ms
Min [Compression] -127.38 N at 160.00 ms